



Printer driver user guide for

- **REINER jetStamp 1025**
- **REINER jetStamp graphic 970**
 - **REINER 940**

Version 7.0.05.9700

949014-000-C

© 2013 Ernst Reiner GmbH & Co. KG

All rights reserved. Translations, reprints, or any other form of reproduction of this manual, even in part and regardless of form, require our prior, express written permission.

We reserve the right to change the contents of this manual without prior notice.

This manual has been compiled with great care, however we cannot accept liability for any errors or defects or for damage resulting from them

Ernst Reiner GmbH & Co. KG

Postfach 1351

D-78115 Furtwangen

Tel. (0) 7723/657-0

Fax (0) 7723/657200

E-Mail: reiner@reiner.de

Internet: <http://www.reiner.de>

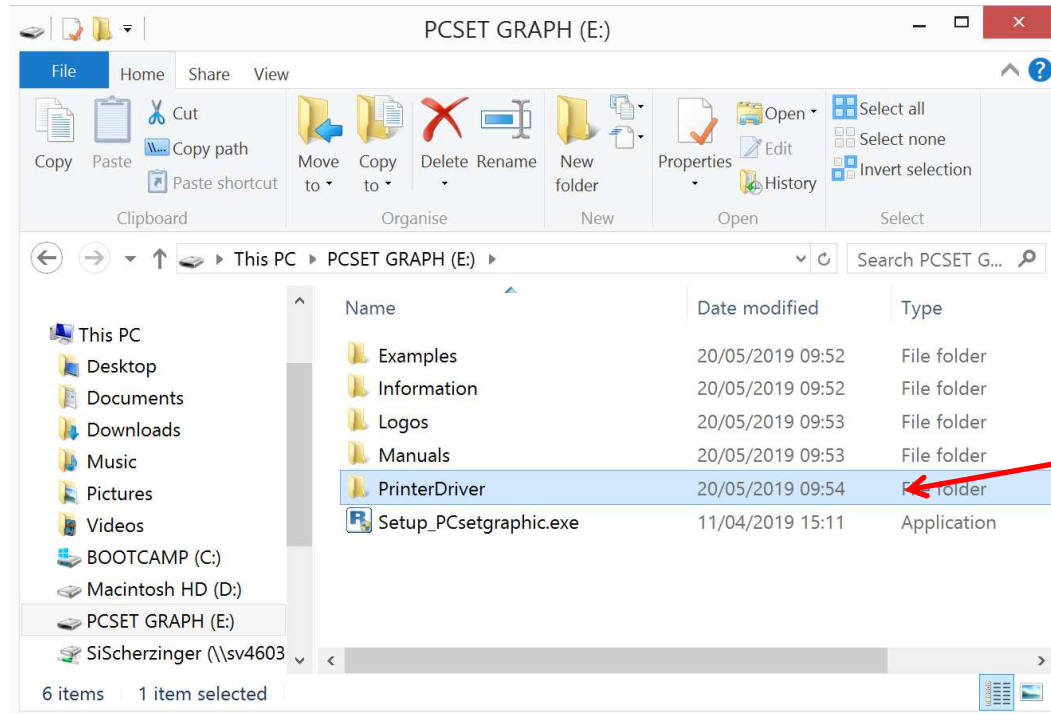
Table of contents

1. Install printer driver	4
2. Generals about printer driver	16
a. Prepare printer and check status of print job.....	16
b. Basic settings (Printing preferences)	18
c. Basic settings (Printer properties)	20
3. Nice Status Monitor	22
Use Nice Status Monitor to get detail status about connection, device errors or ink level of REINER printers.....	22
a. Install Nice Status Monitor.....	22
b. Use Nice Status Monitor	26
Three REINER printer devices installed on PC, but no device connected.....	26
4. Use printer driver as Standard Windows printer driver	27
a. Printing with Notepad	27
b. Printing with Windows Photo Viewer.....	28
c. Printing with Excel	29
d. Printing with WordPad.....	32
e. Printing with Word.....	35
5. Use printer driver with extended functions.....	39
a. Create and print simple Label.....	39
b. Create and print difficult label with Counter, Date/Time and variable Barcode	43

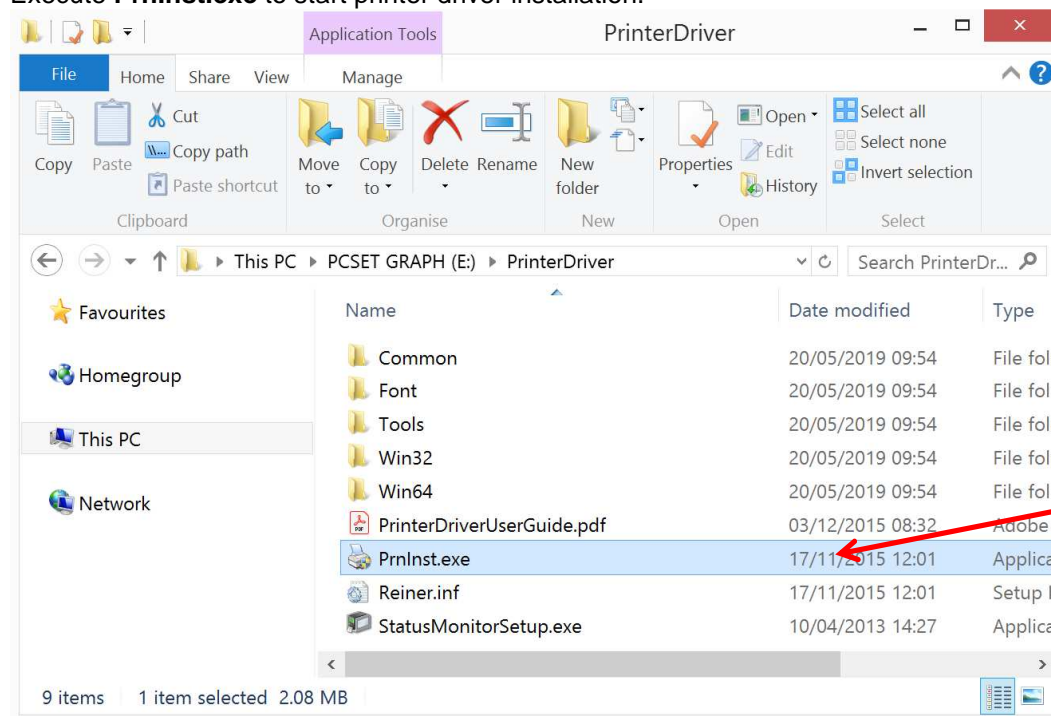
1. Install printer driver

Printer driver will be delivered via PCset graphic.

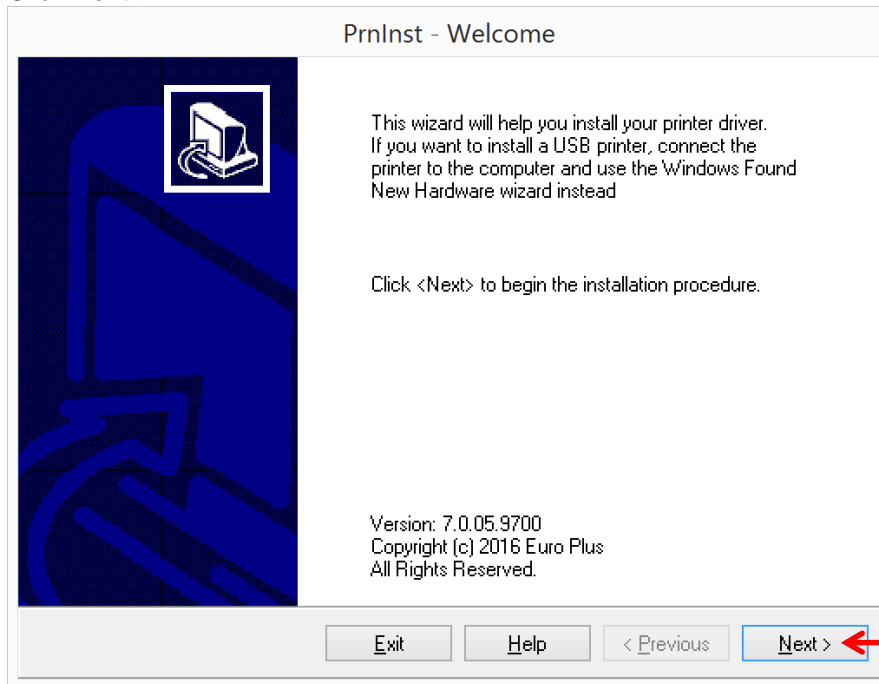
Printer driver is stored on installation medium in folder **PrinterDriver**.



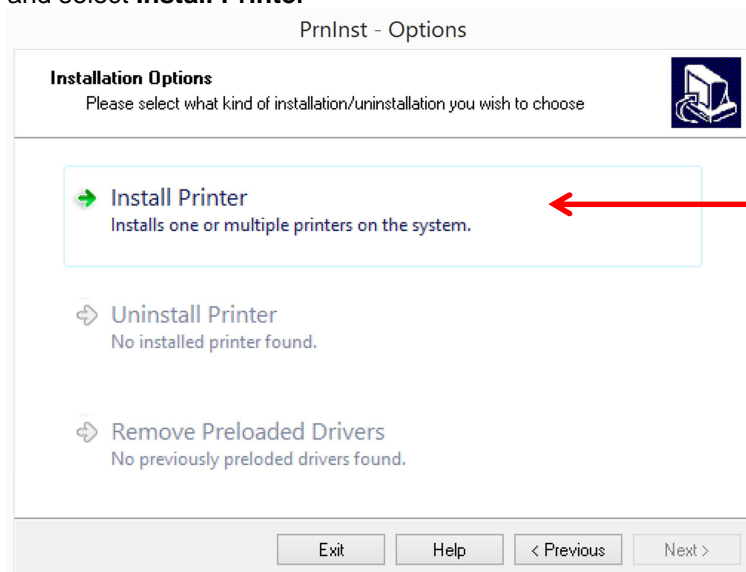
Execute **PnnInst.exe** to start printer driver installation.



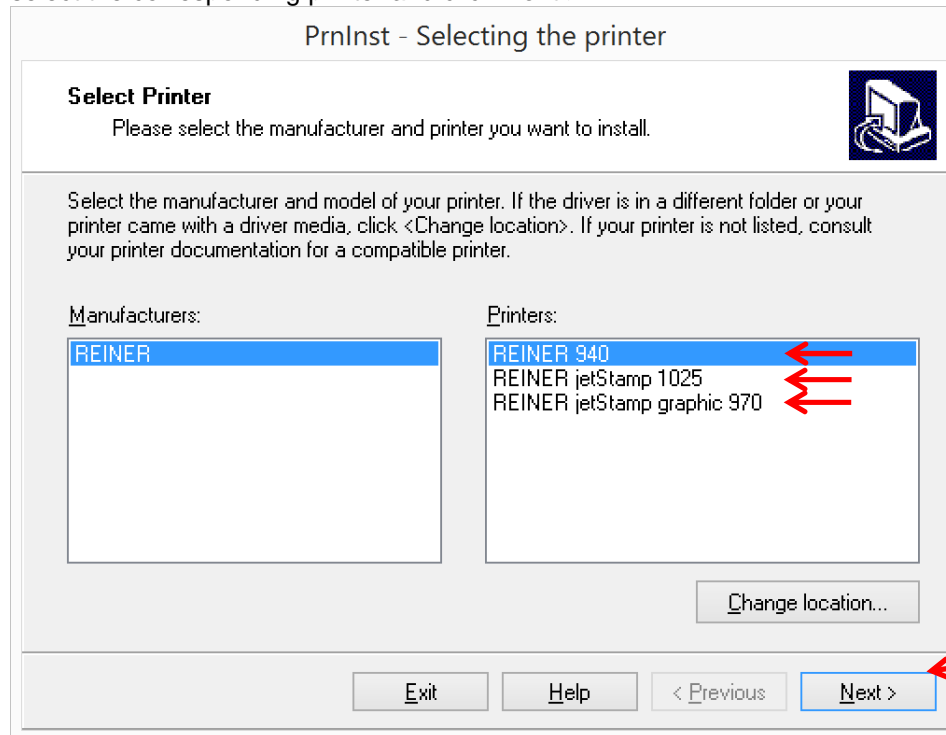
Click **Next >**



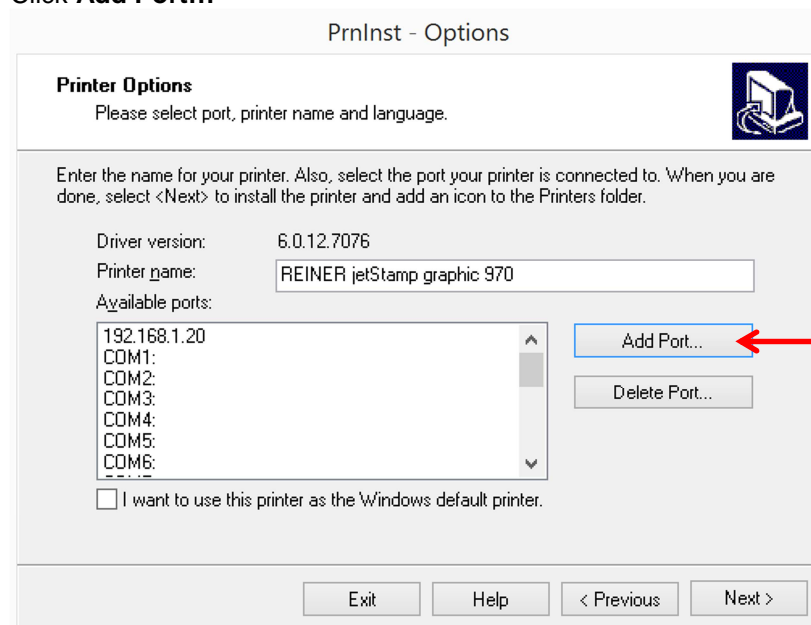
and select **Install Printer**



select the corresponding printer and click **Next >**

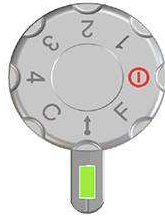


Click **Add Port...**



and select the **communication typ** and select **Next >**.

Important: In case of device REINER 940 or jetStamp graphic 970, switch on the device by turning the set wheel of REINER device to position Online/Bluetooth.




In case of USB

PrnInst - Add New Port


Add Port

Please select a port type to install a new port

To install new port on your system first select a suitable port type. In case of Bluetooth port please check if your device is correctly paired.

☒ USB 

☐ Bluetooth

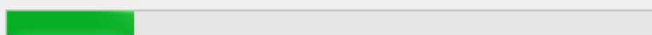
Next > 


PrnInst - Device installation

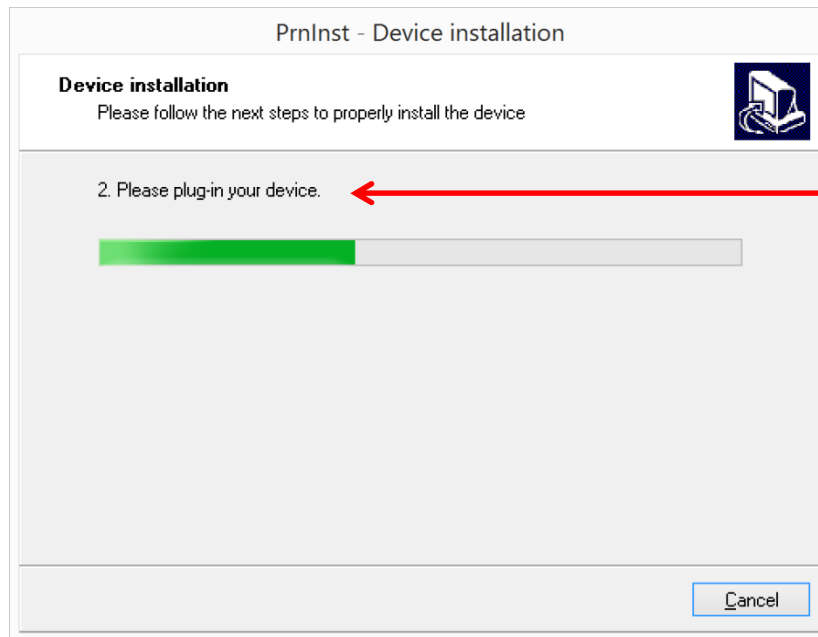
Device installation

Please follow the next steps to properly install the device

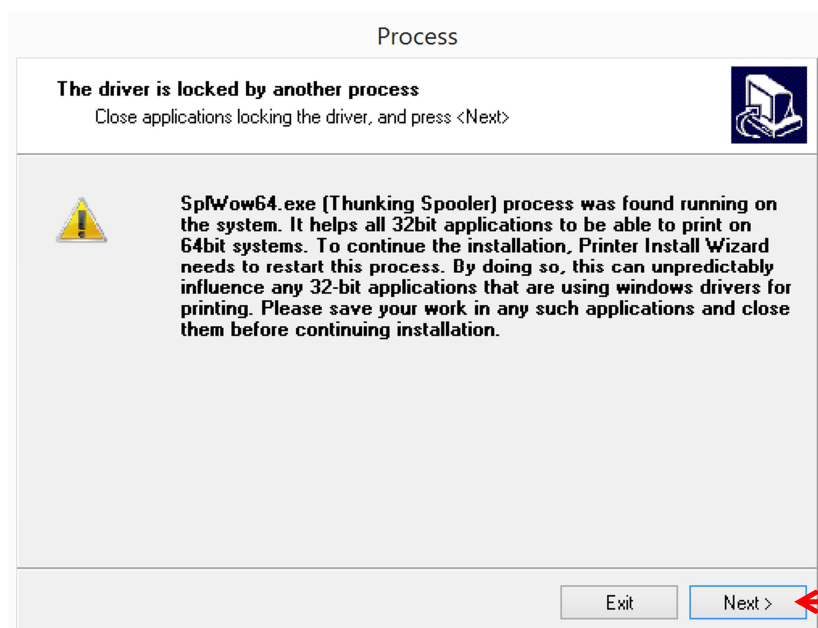
1. Please unplug your device or press "Next >" if the device is already unplugged.



Next > 



Click **Next >** if the following dialog will be displayed.



If jetStamp graphic 970 is connected

Check if correct device is selected.

Check if Communication channel is USB.

After that, expand the name by serial number.

The screenshot shows the 'REINER Port Monitor' dialog box. It has a title bar with a close button (X). The dialog is divided into several sections:

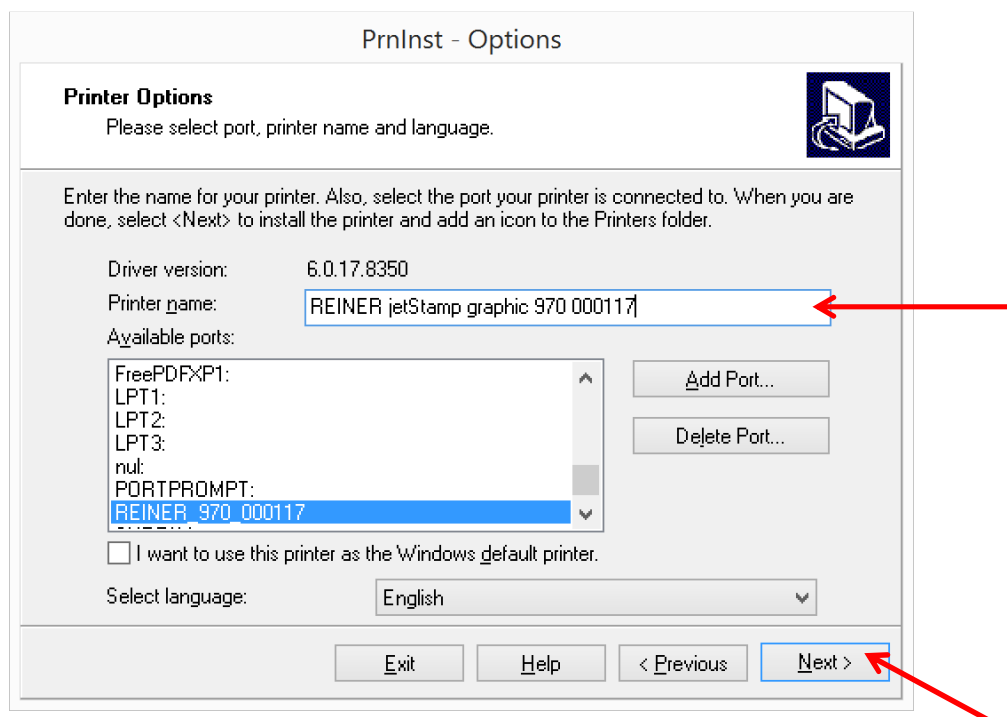
- Port name:** A text field labeled 'Name:' containing 'REINER_ 970_000117'. A red arrow points to this field.
- Choose device:** A section containing:
 - Detected device:** A dropdown menu showing 'REINER_970_000117'. A red arrow points to this dropdown.
 - Communication channel:** A dropdown menu showing 'USB'. A red arrow points to this dropdown.
 - Action:** A button labeled 'Search for devices'.
- Device information:** A section showing:
 - Bluetooth address: /
 - Model: 970
 - Serial number: 000117
- Searching for devices:** An empty text area.
- Buttons:** 'OK' and 'Cancel' buttons at the bottom. A red arrow points to the 'OK' button.

If jetStamp 1025 is connected

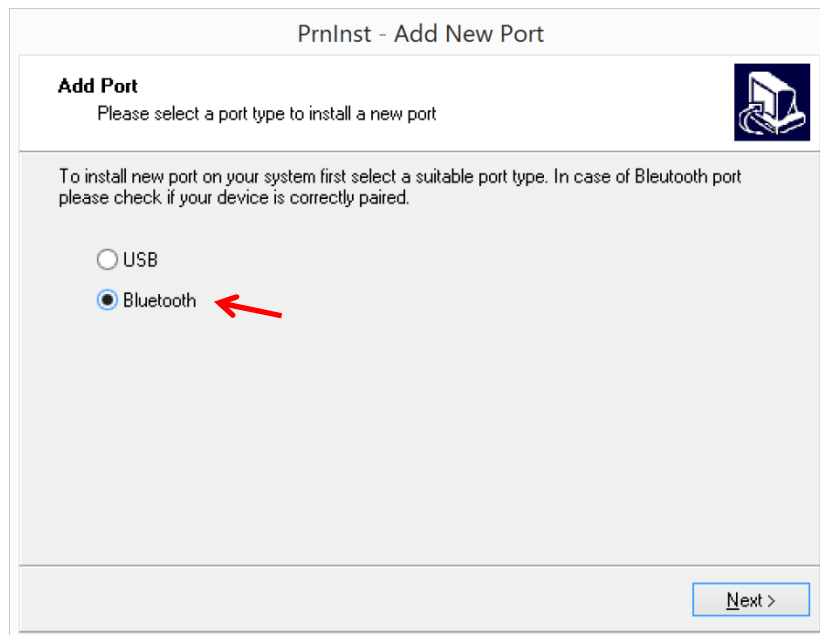
The screenshot shows the 'REINER Port Monitor' dialog box for a jetStamp 1025 device. It has a title bar with a close button (X). The dialog is divided into several sections:

- Port name:** A text field labeled 'Name:' containing 'REINER_ 1030_000001'.
- Choose device:** A section containing:
 - Detected device:** A dropdown menu showing 'REINER_1030_000001'.
 - Communication channel:** A dropdown menu showing 'USB'.
 - Action:** A button labeled 'Search for devices'.
- Device information:** A section showing:
 - Bluetooth address: /
 - Model: 1030
 - Serial number: 000001
- Searching for devices:** An empty text area.
- Buttons:** 'OK' and 'Cancel' buttons at the bottom.

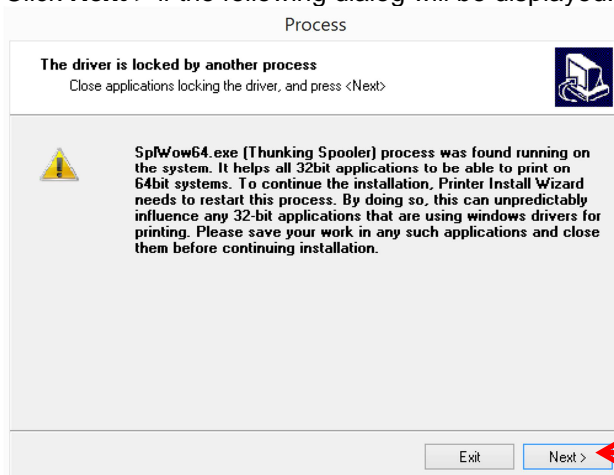
After adding the port, expand also the Printer name by serial number and press **Next >**



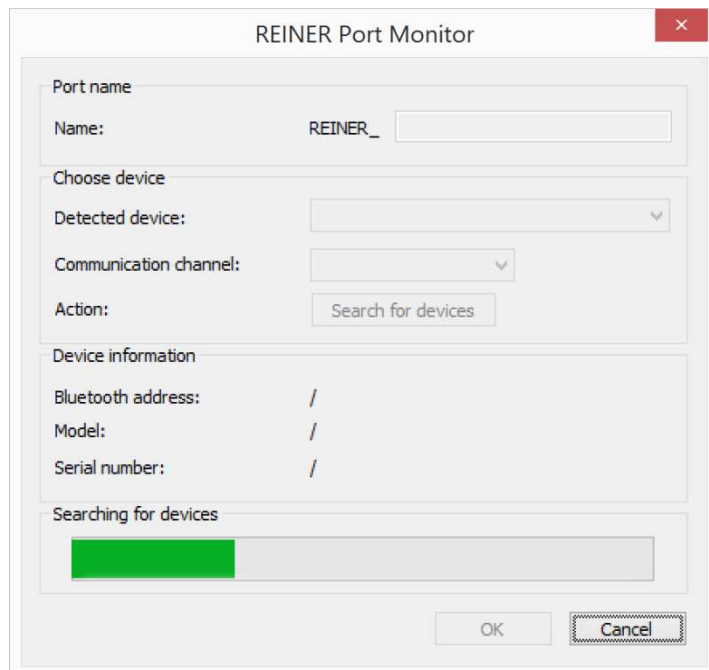
In case of Bluetooth



Click **Next >** if the following dialog will be displayed.



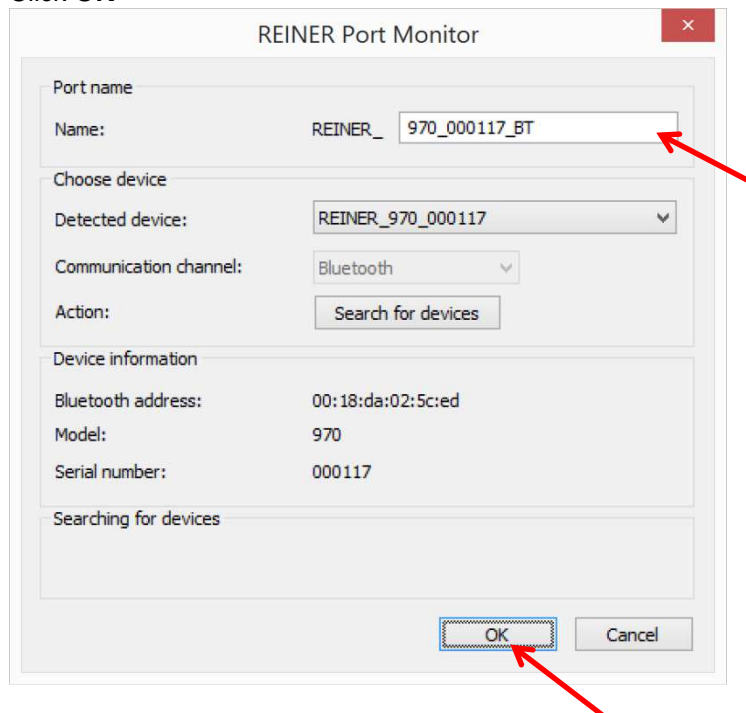
Printer driver is searching after available REINER devices.



If found, expand the name by serial number as shown below.

If jetStamp graphic 970 is connected

Click **OK**



If jetStamp 1025 is connected

REINER Port Monitor

Port name

Name: REINER_ 1030_000025_BTH

Choose device

Detected device: REINER_1030_000025

Communication channel: Bluetooth

Action: Search for devices

Device information

Bluetooth address: 00:13:43:09:e2:53

Model: 1030

Serial number: 000025

Searching for devices

OK Cancel

After adding the port, expand also the Printer name by serial number and by BT for Bluetooth and press **Next >**

PrnInst - Options

Printer Options

Please select port, printer name and language.

Enter the name for your printer. Also, select the port your printer is connected to. When you are done, select <Next> to install the printer and add an icon to the Printers folder.

Driver version: 6.0.17.8350

Printer name: REINER jetStamp graphic 970 000117 BT

Available ports:

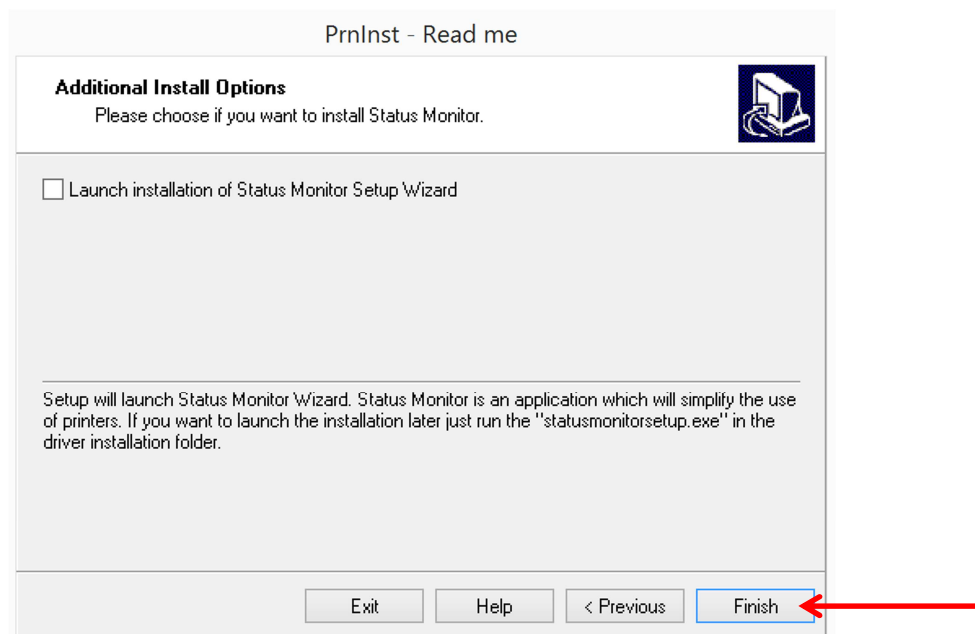
- LPT1:
- LPT2:
- LPT3:
- nul:
- PORTPROMPT:
- REINER_970_000117
- REINER_970_000117_BT

☐ I want to use this printer as the Windows default printer.

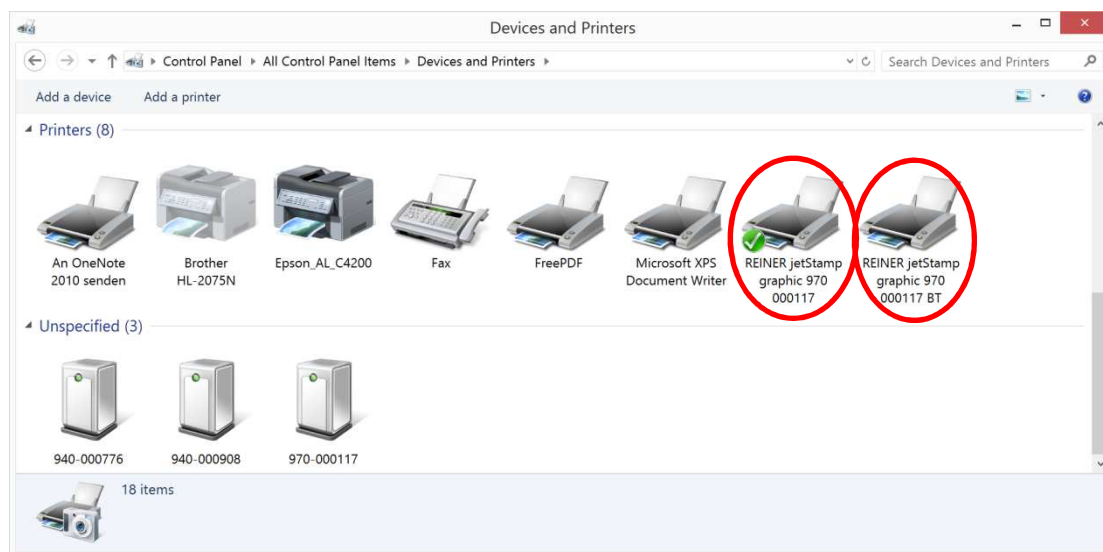
Select language: English

Exit Help < Previous Next >

and finish installation by clicking **Finish**



After successful installation the printer driver should be displayed as printer device on page **Devices and Printers**



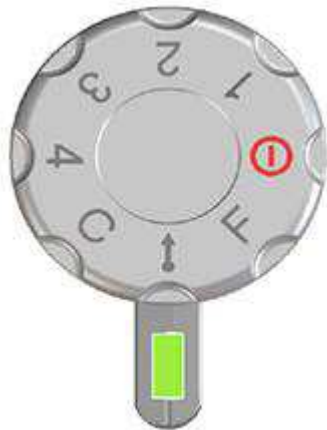
2. Generals about printer driver

Note: Each REINER printer needs its own printer driver. It isn't possible to use more REINER printer with just one printer driver. The pairing will be done over serial number.

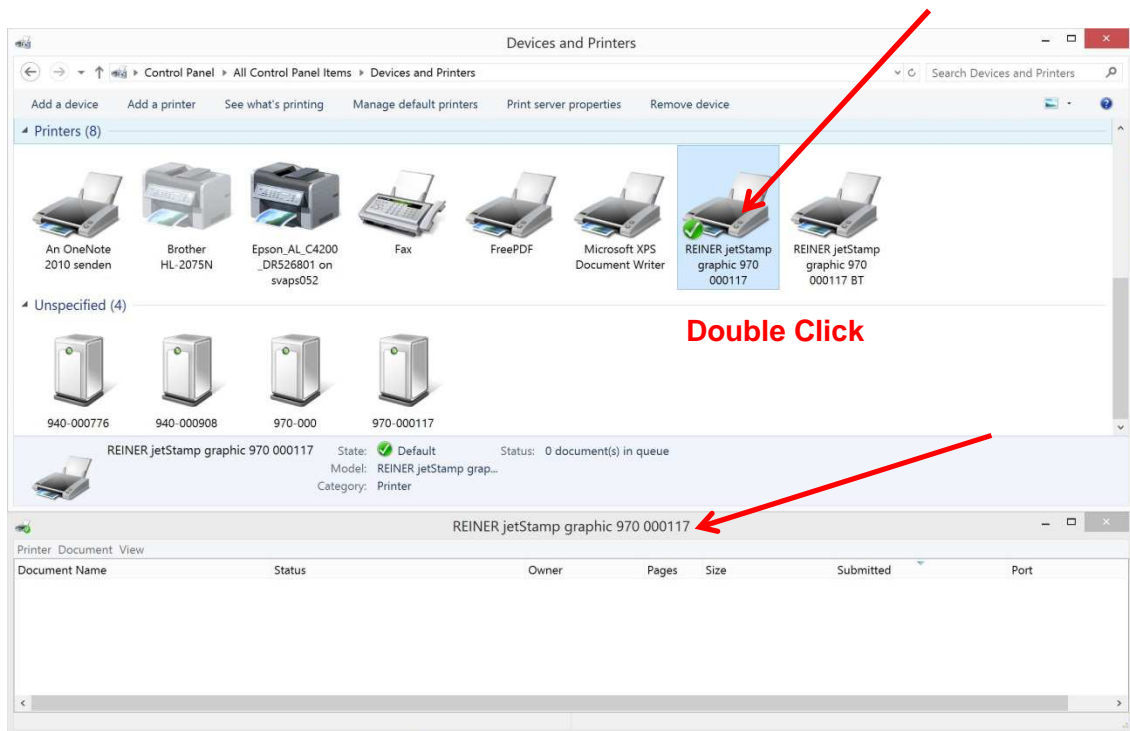
Note: Printer driver operation can be disturbed by PCset graphic. Therefore keep PCset graphic closed during printer driver operation.

a. Prepare printer and check status of print job

- To send print data to device set wheel must be in position Online/Bluetooth. In case of **REINER 940** device, closure lever must also be released.



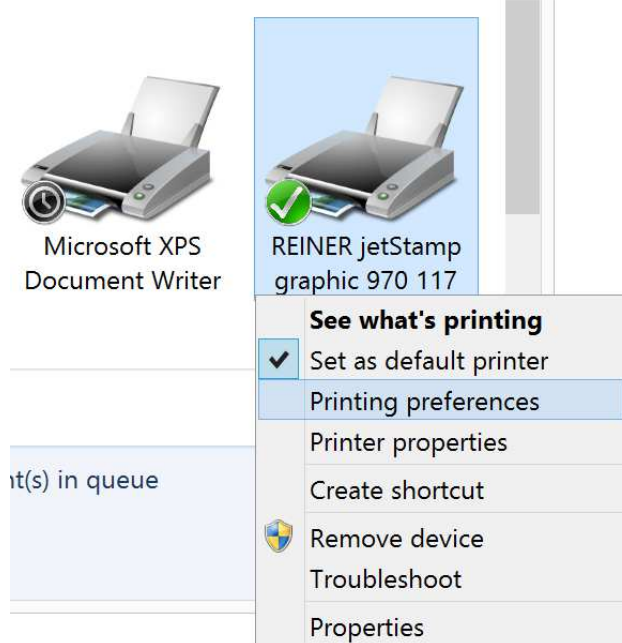
- When print job is successful sent to device, print job is listed in printer queue as long as print job isn't printed.
Printer queue can be found by double clicking printer symbol in **Devices and Printers**

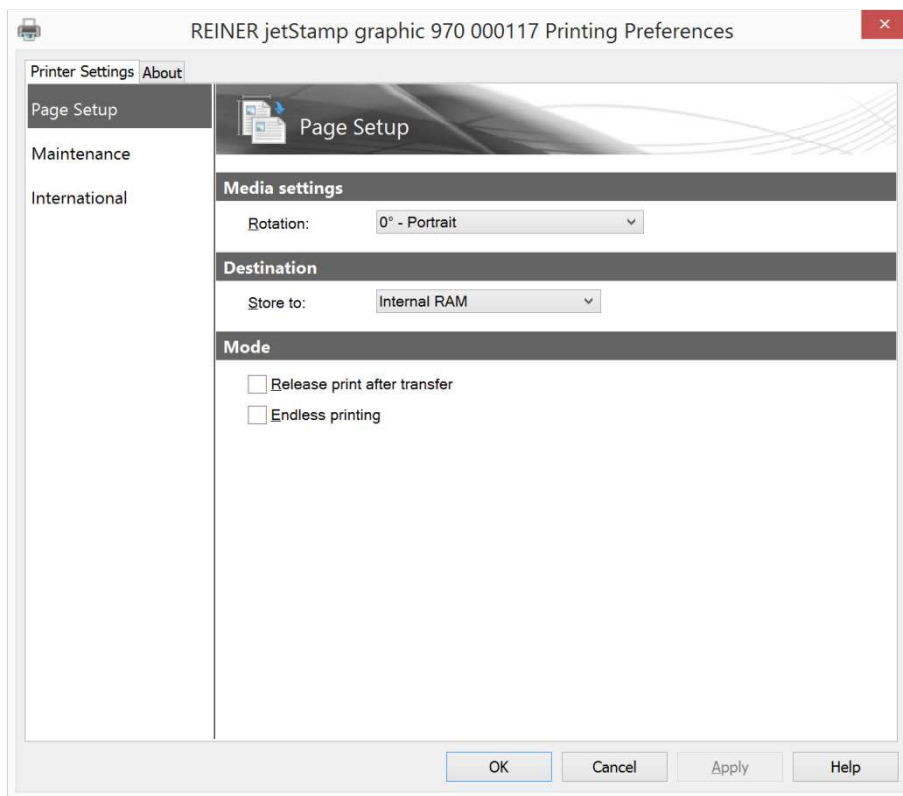


b. Basic settings (Printing preferences)

User can do user-defined settings of printer driver after installation.

To open the Printer preferences open in Windows the page **Devices and Printers** and right click onto the REINER device printer symbol and select **Printing preferences**.





Destination → Store to:

Internal RAM used when printer will be taken as desktop printer.
Print data are available as long as set wheel of device is in Online position.
Supports faster data transfer.

To printed the print data turn set wheel of device in Online position.

Internal FLASH used when printer will be taken as mobile printer, without frequently data transfer. Supports device internal functions like date/time, counter and variable barcode.
Print data will be stored in non-volatile memory in device. Print data are available after switching off/on device.
Supports slower data transfer than to internal RAM.
To print the print data turn set wheel of device to position 1.

Mode → Release print after transfer:

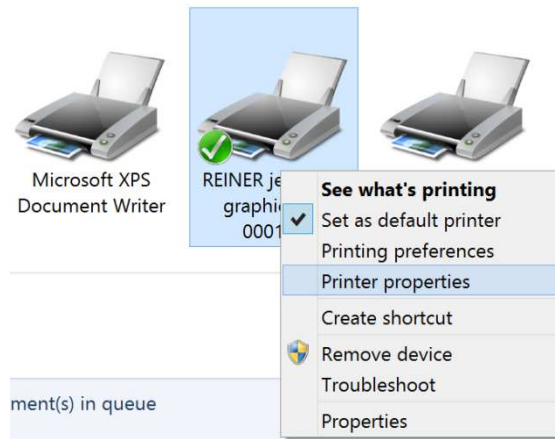
Printer will do a printout when print data are successfully received on device. Works only if **Internal RAM** is selected and device is on paper.

Mode → Endless printing:

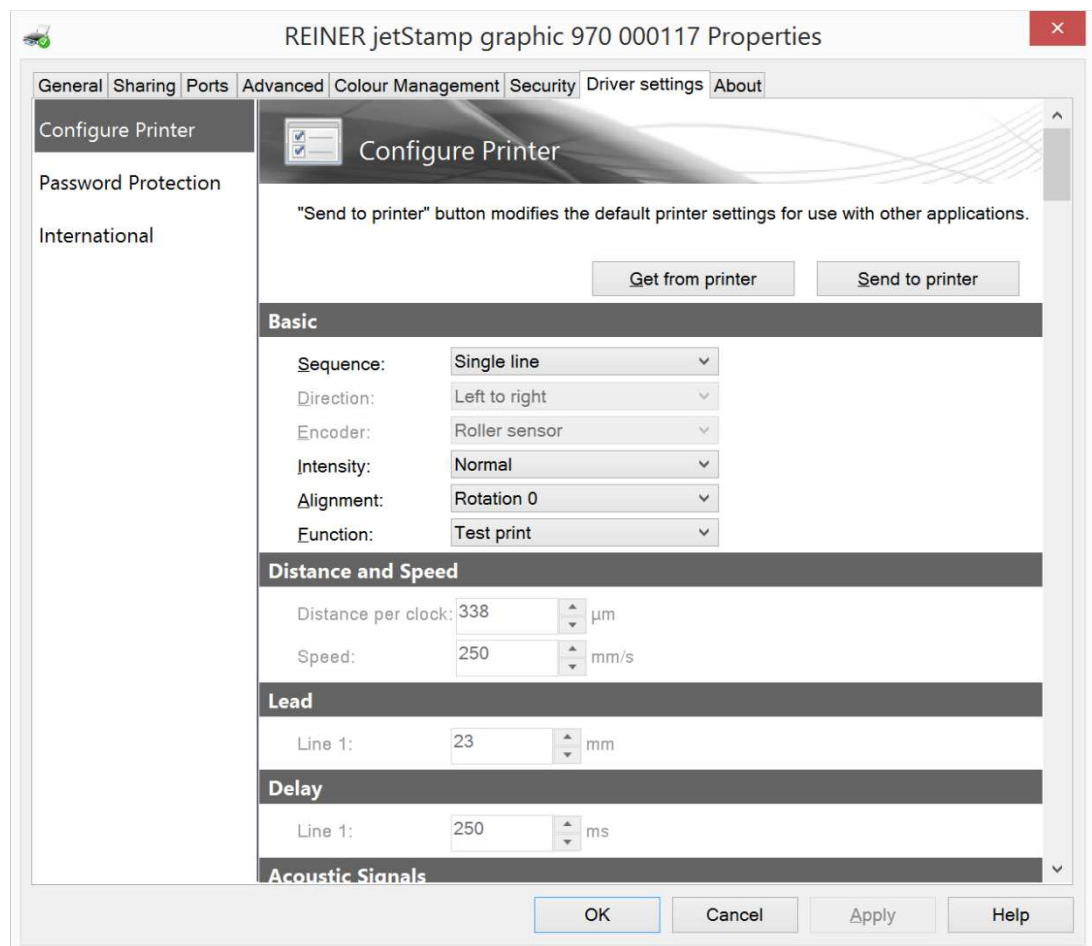
The last transmitted print job can be endless printed. As long as a new print job will be sent. Has only effect if **Internal RAM** is selected.

c. Basic settings (Printer properties)

To open the Printer properties open in Windows the page **Devices and Printers** and right click onto the REINER device printer symbol and select **Printing properties**.

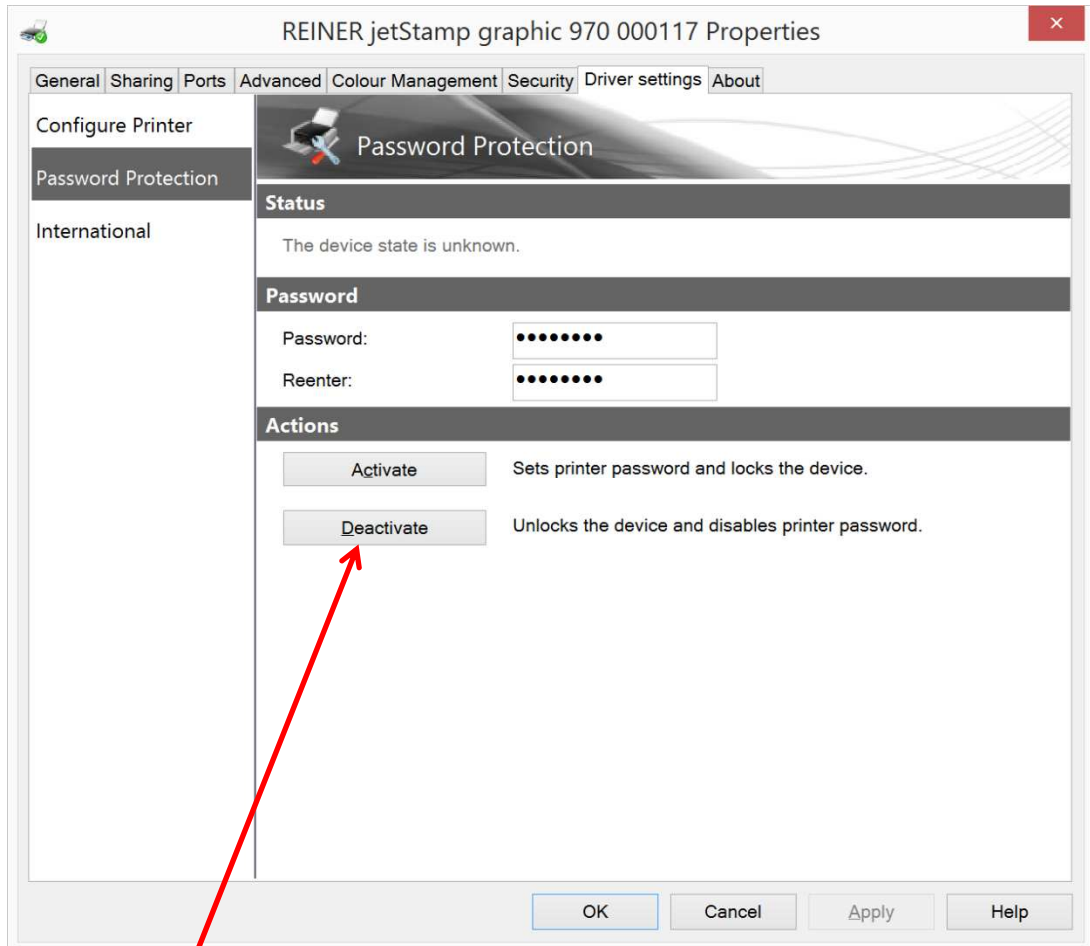


Select the property sheet **Driver settings**



IMPORTANT: To set and get printer properties, use the buttons **Get from printer** and **Send to printer**.

For description of settings parameter take help of PCset graphic chapter
The Software Application PCst graphic → Operating Interface → Device settings → Print settings.



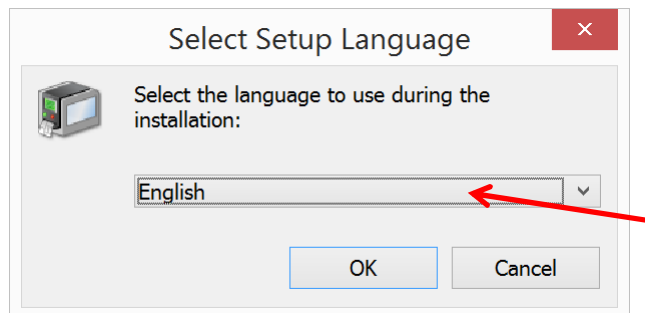
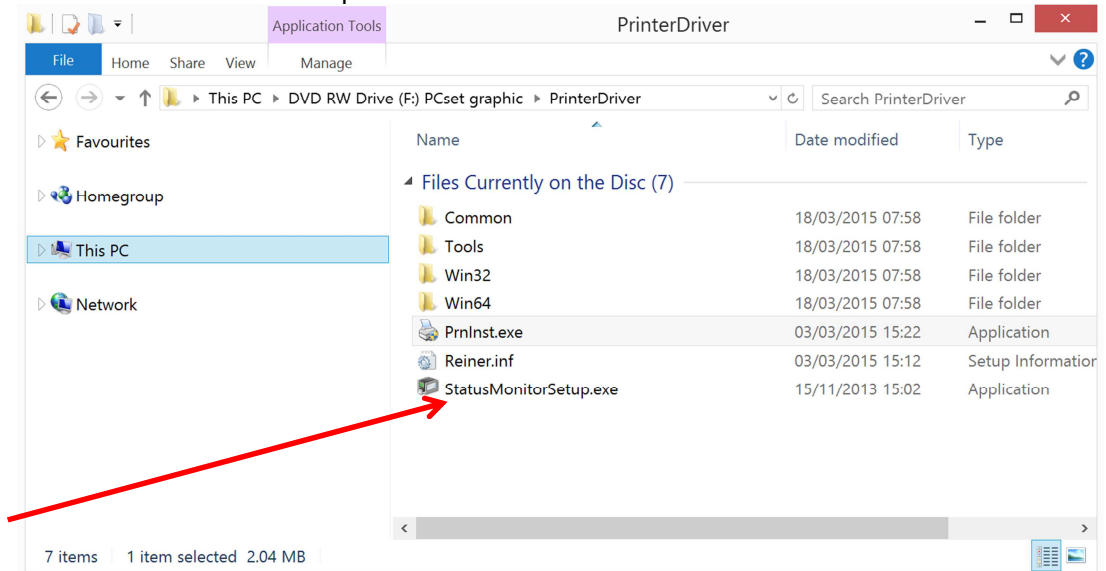
Password protection settings of device.
In some cases device can be password protected. To Deactivate password protection, click **Deactivate**

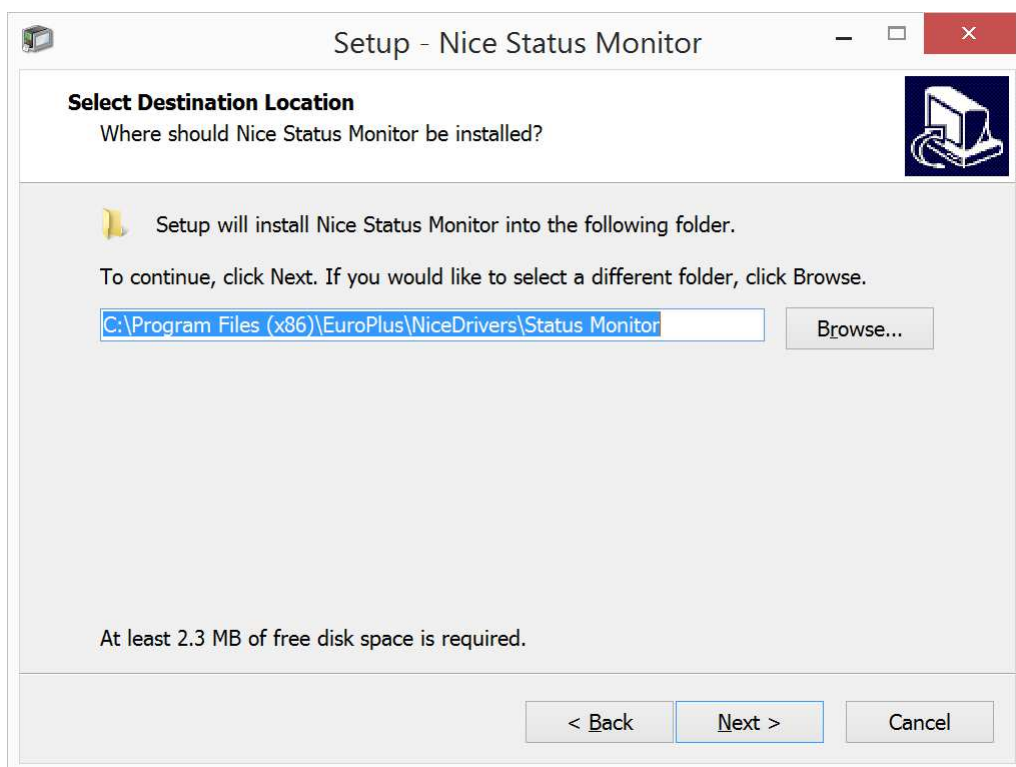
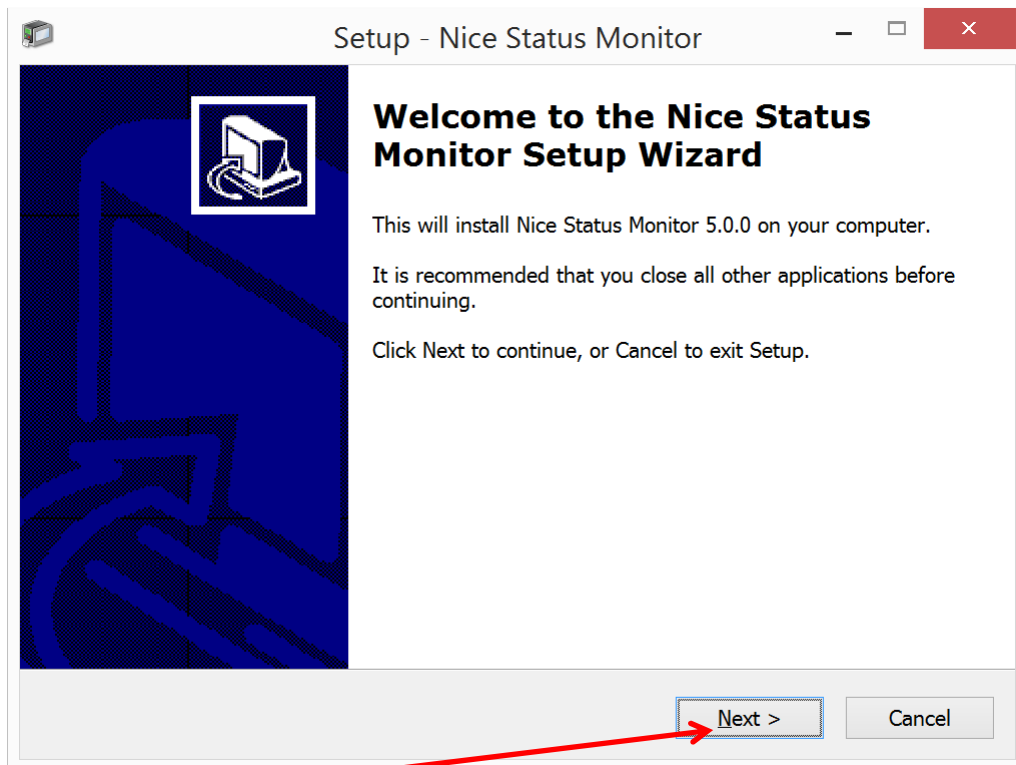
3. Nice Status Monitor

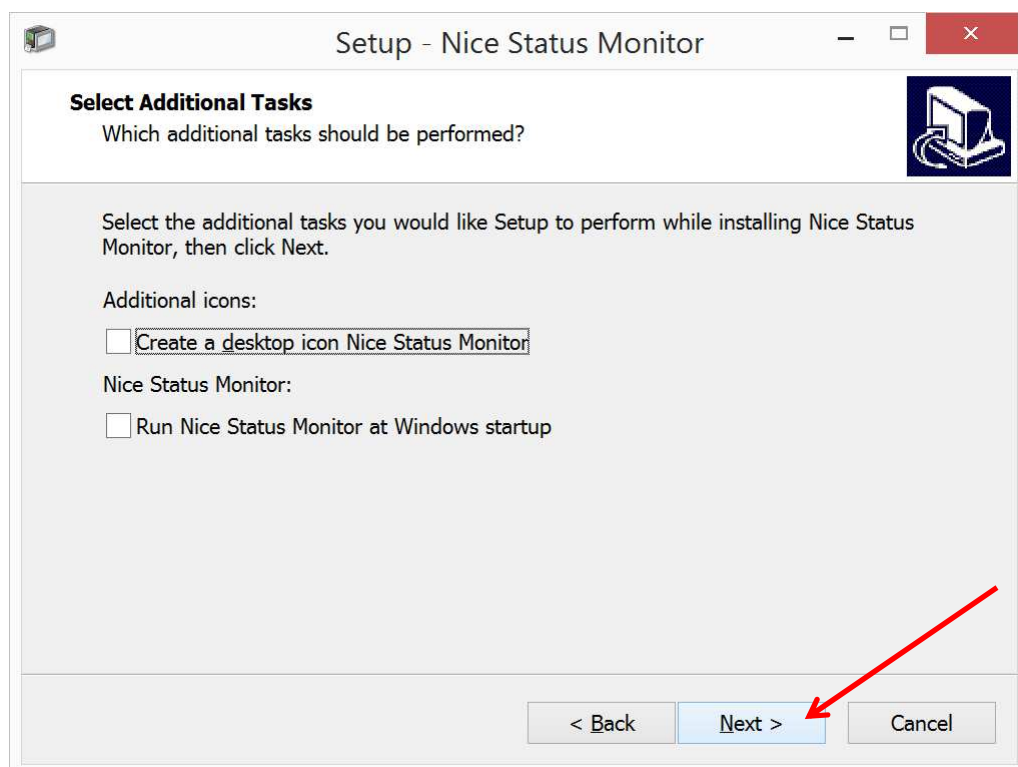
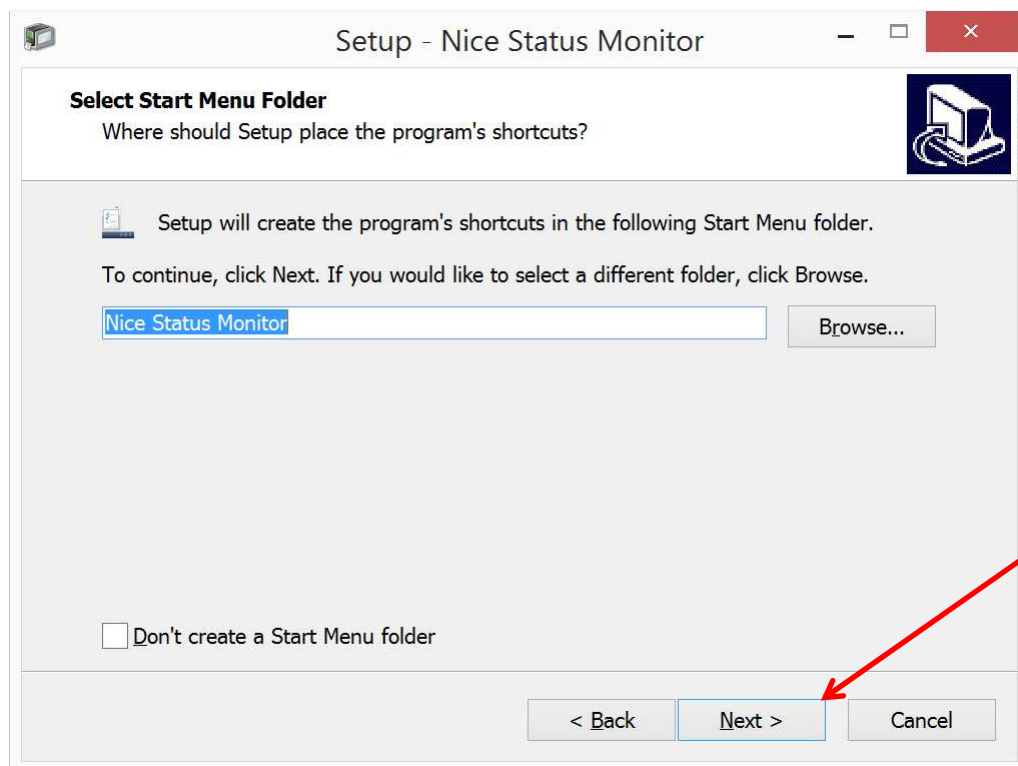
Use **Nice Status Monitor** to get detail status about connection, device errors or ink level of REINER printers.

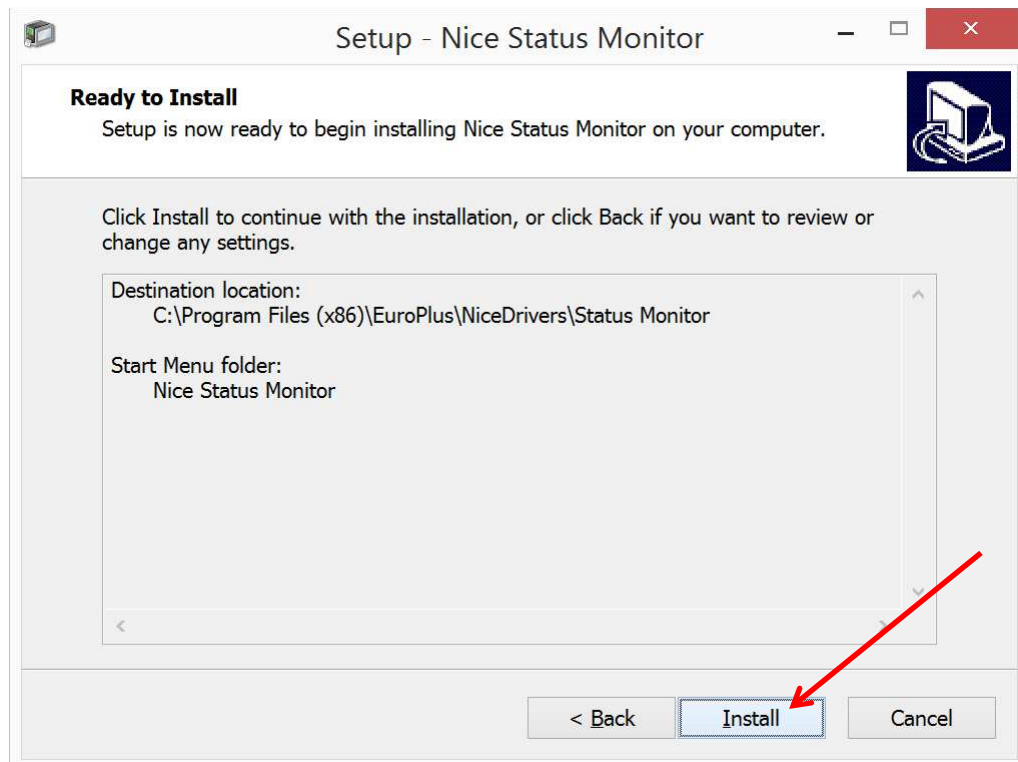
a. Install Nice Status Monitor

Execute StatusMonitorSetup.exe to start Nice Status Monitor installation.

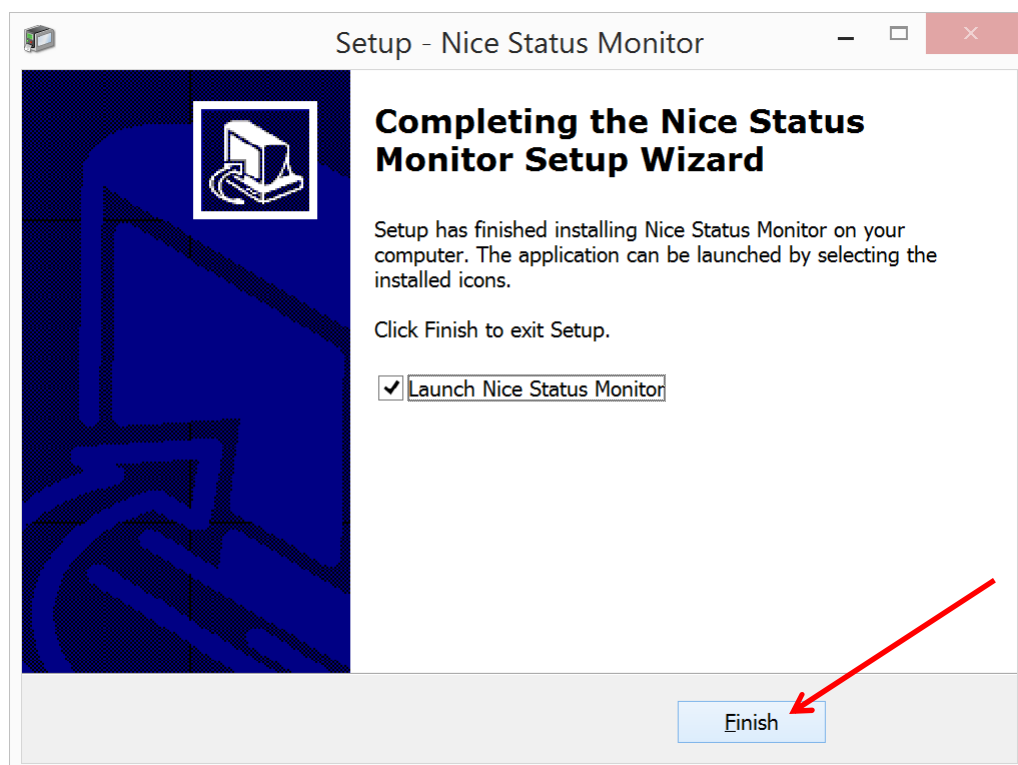






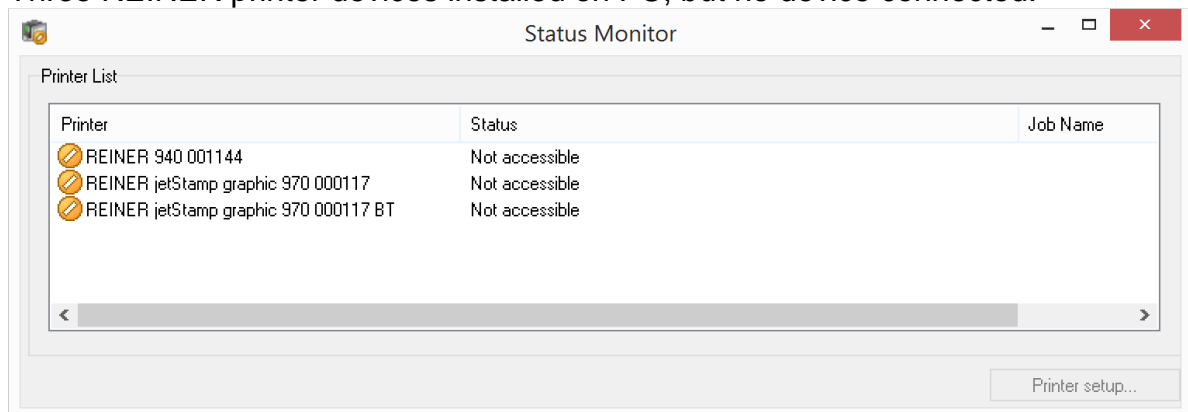


finish installation by clicking **Finish**.



b. Use Nice Status Monitor

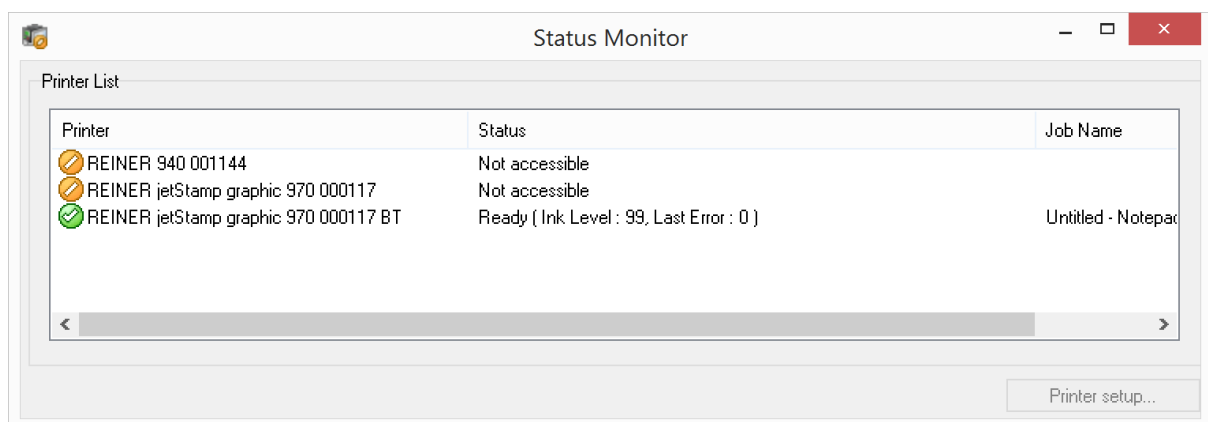
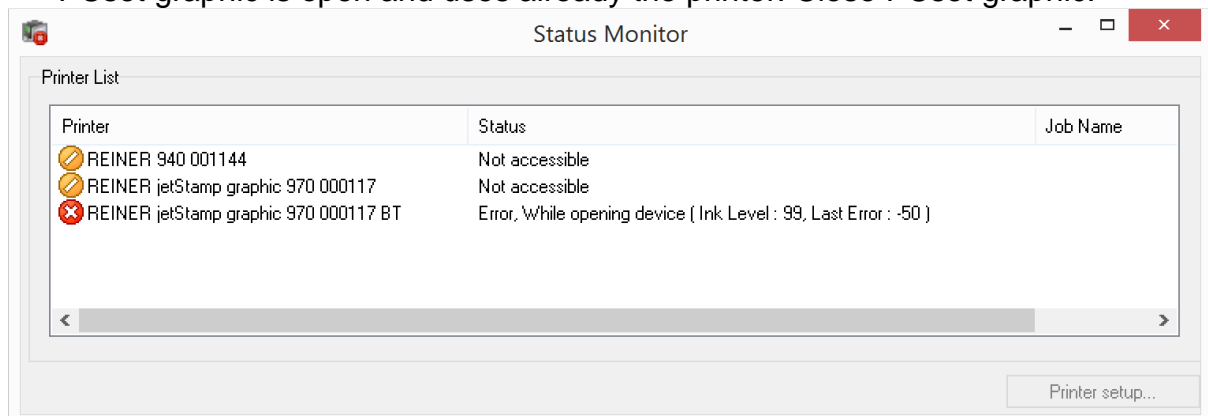
Three REINER printer devices installed on PC, but no device connected.



jetStamp graphic 970 000117 BT is switched on, but an error occurred during opening process.

Possible reasons:

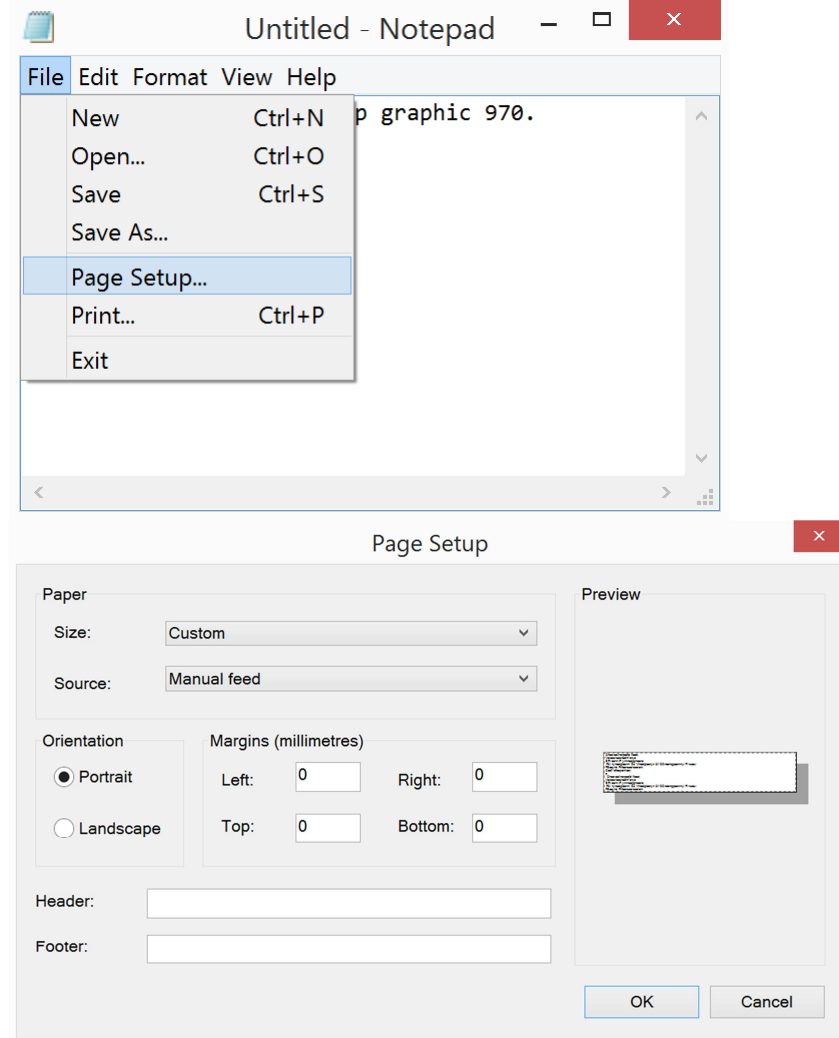
- Just send a print job to jetStamp graphic 970 000117 BT to device.
- PCset graphic is open and uses already the printer. Close PCset graphic.



4. Use printer driver as Standard Windows printer driver

a. Printing with Notepad

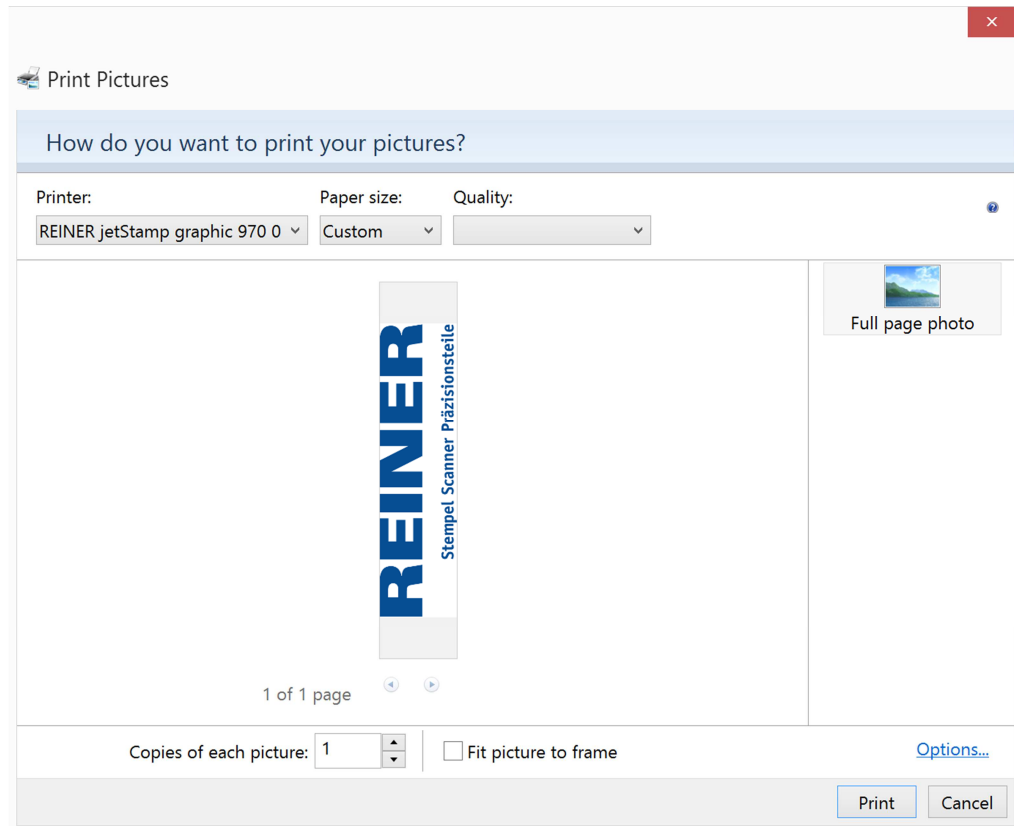
In Notepad, write a text to print. After that, setup the page as follow:



To print the text, go to File → Print → Select REINER Printer and click button "Print".

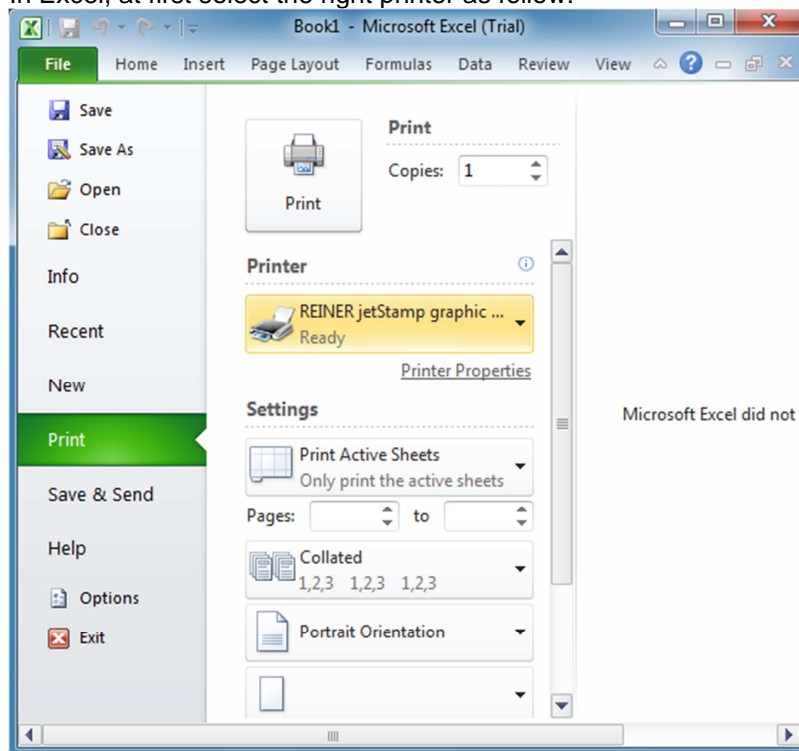
b. Printing with Windows Photo Viewer

Open a picture with Windows Photo Viewer. Go to "Print" → "Print ...", select REINER Printer and maybe uncheck option "Fit picture to frame", then press button "Print".

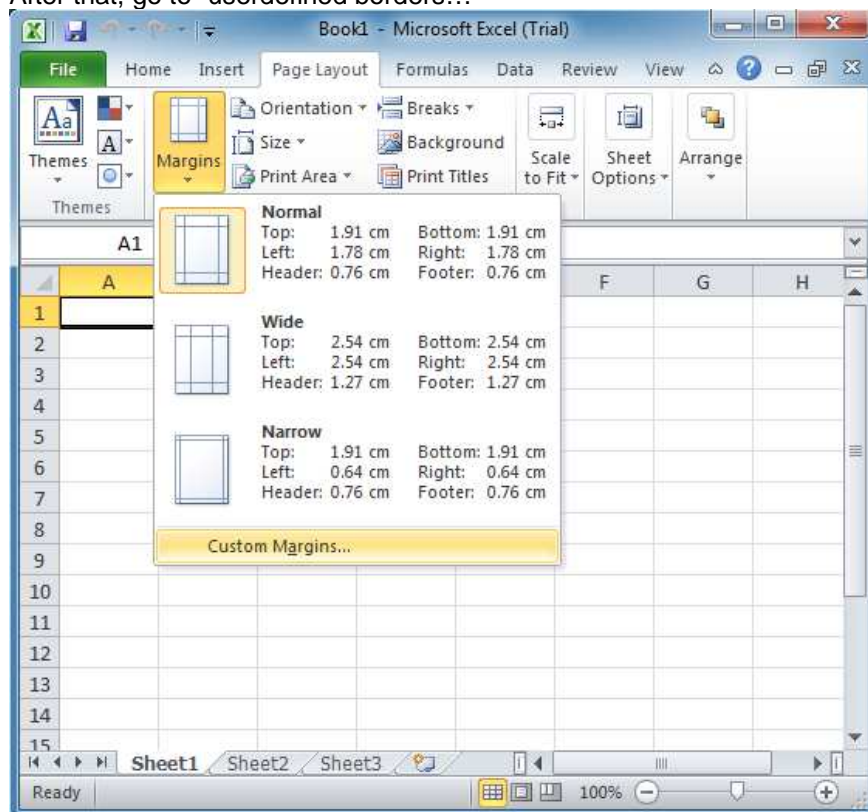


c. Printing with Excel

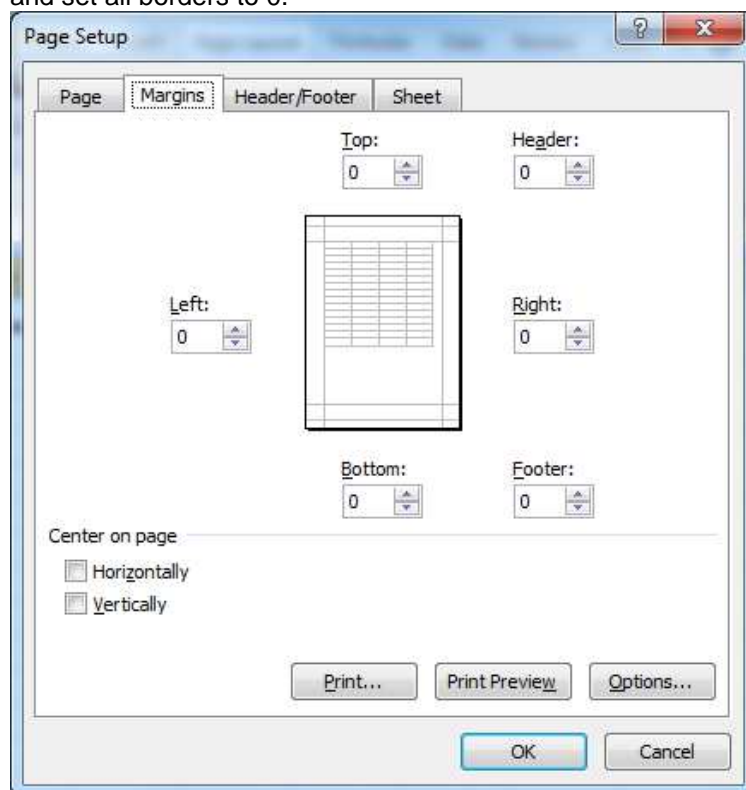
In Excel, at first select the right printer as follow:



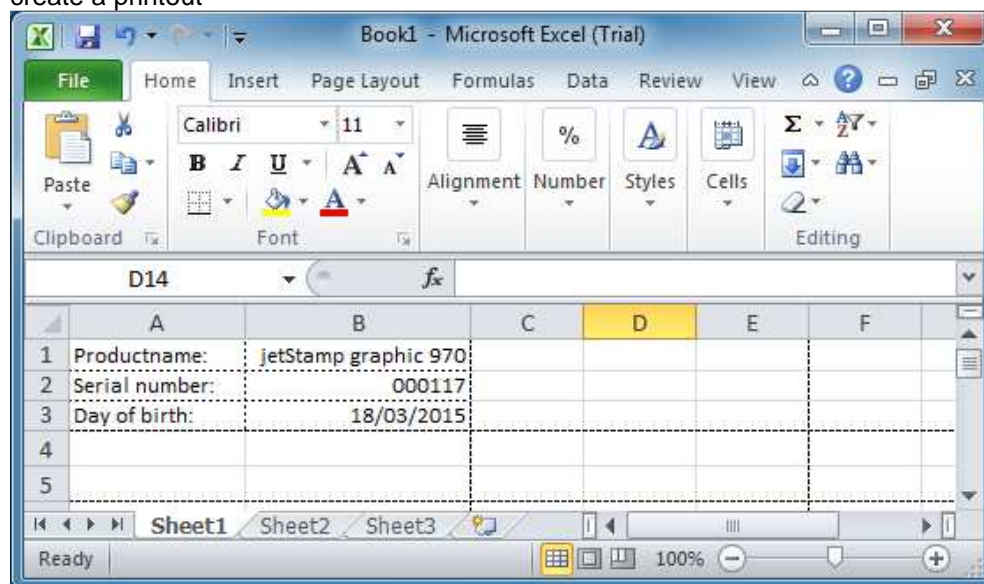
After that, go to “userdefined borders...”



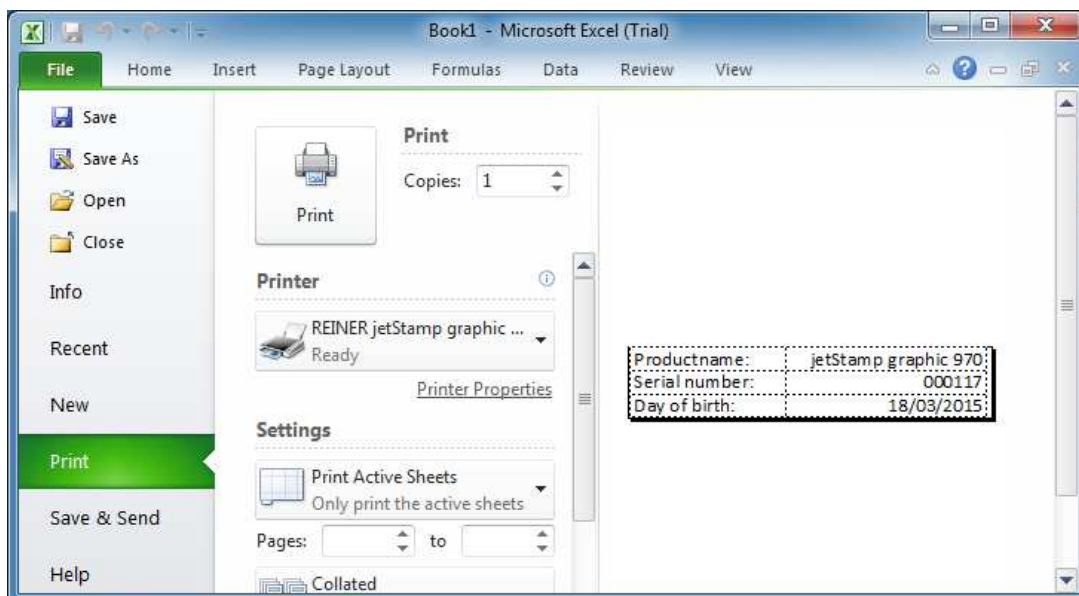
and set all borders to 0.



create a printout



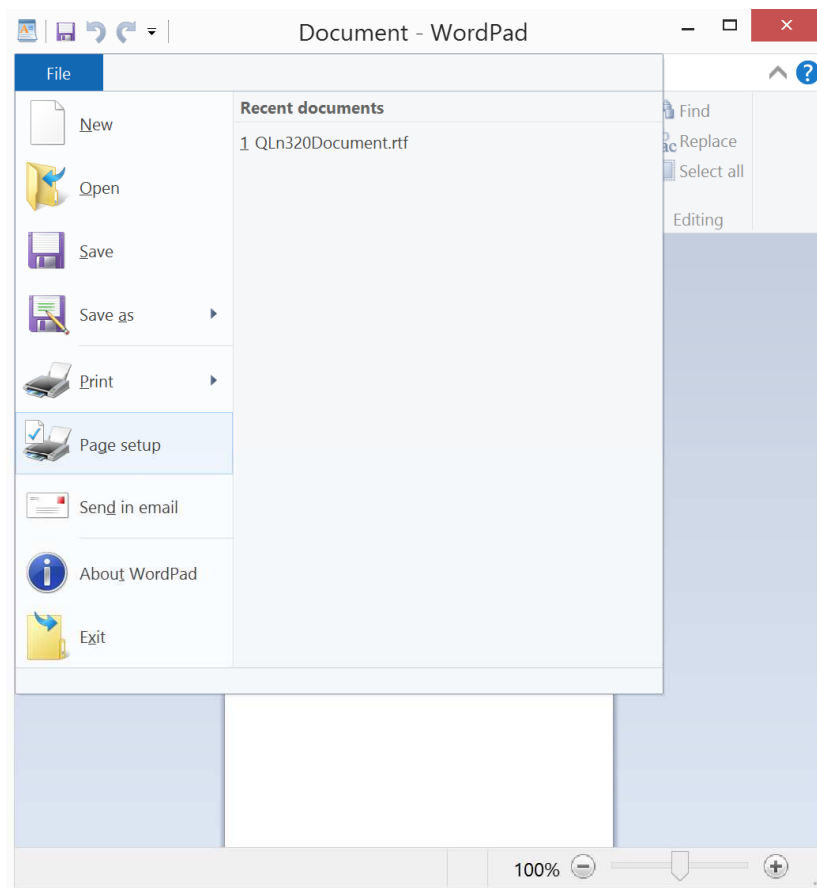
and go after that to File → Print



to send the print data to printer.

d. Printing with WordPad

In WordPad, at first select the right printer in File → Print.
After that setup the page as follow:



Page Setup

Size: Custom

Source: Manual feed

Orientation

☒ Portrait

☐ Landscape

Margins (millimetres)

Left: 0 Right: 0

Top: 0 Bottom: 0

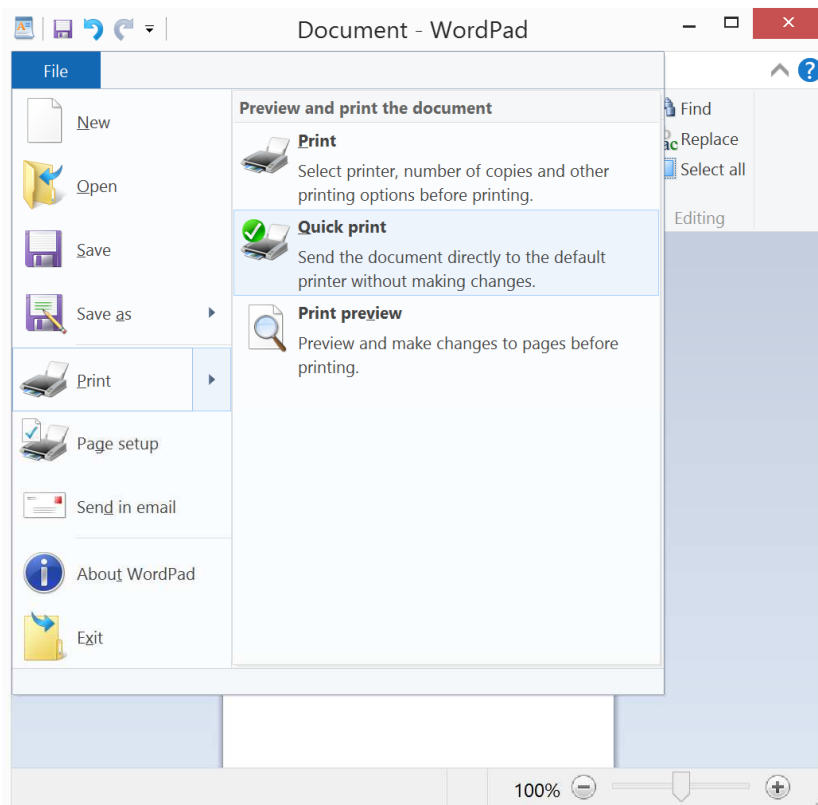
☐ Print Page Numbers

OK Cancel

Insert a text.

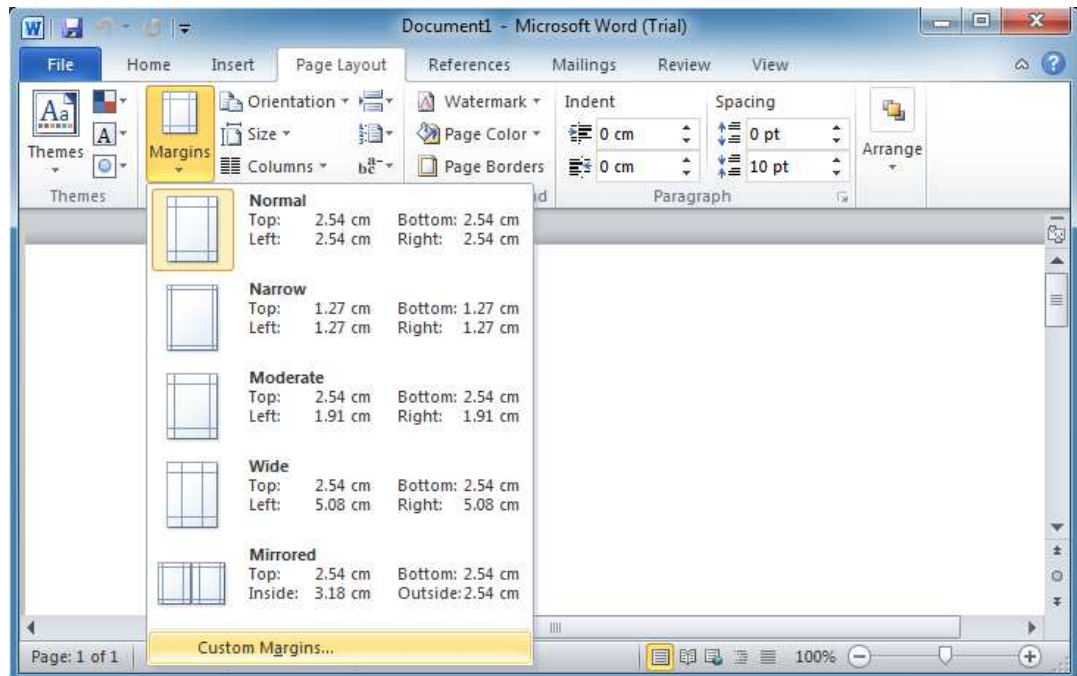
Note: The height of the print area is limited.

To print the document, go to File → Print, or File → Quick print.

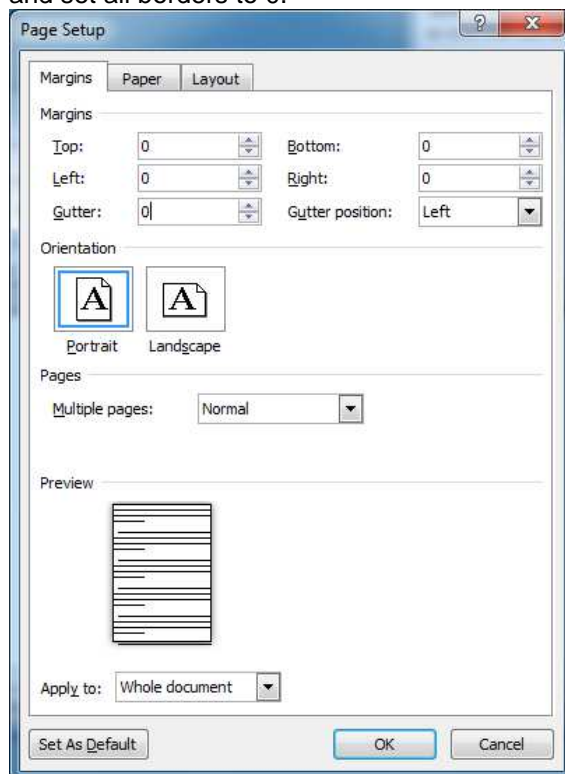


e. Printing with Word

In Word, at first select the right printer in File → Print.
After that, go to “userdefined borders...”

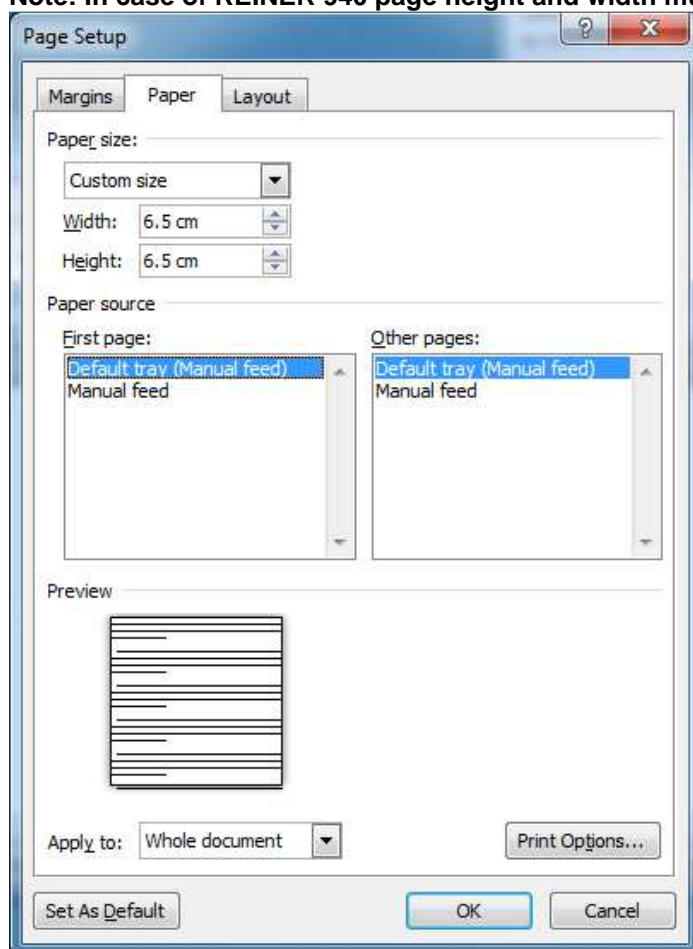


and set all borders to 0.

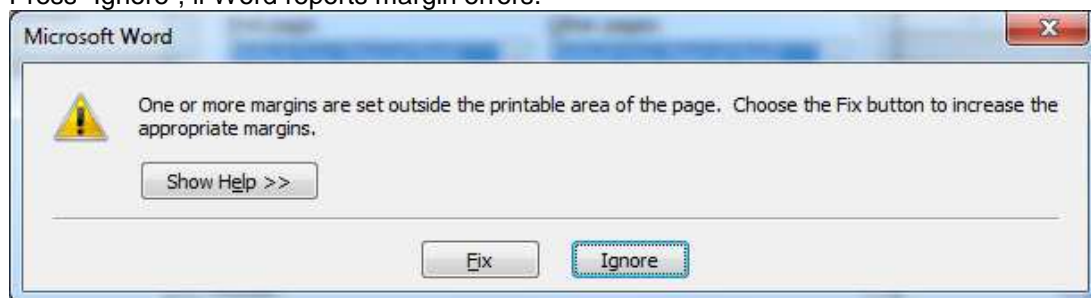


and page width and page height to 6.5 cm.

Note: In case of REINER 940 page height and width must be set to 14 cm.

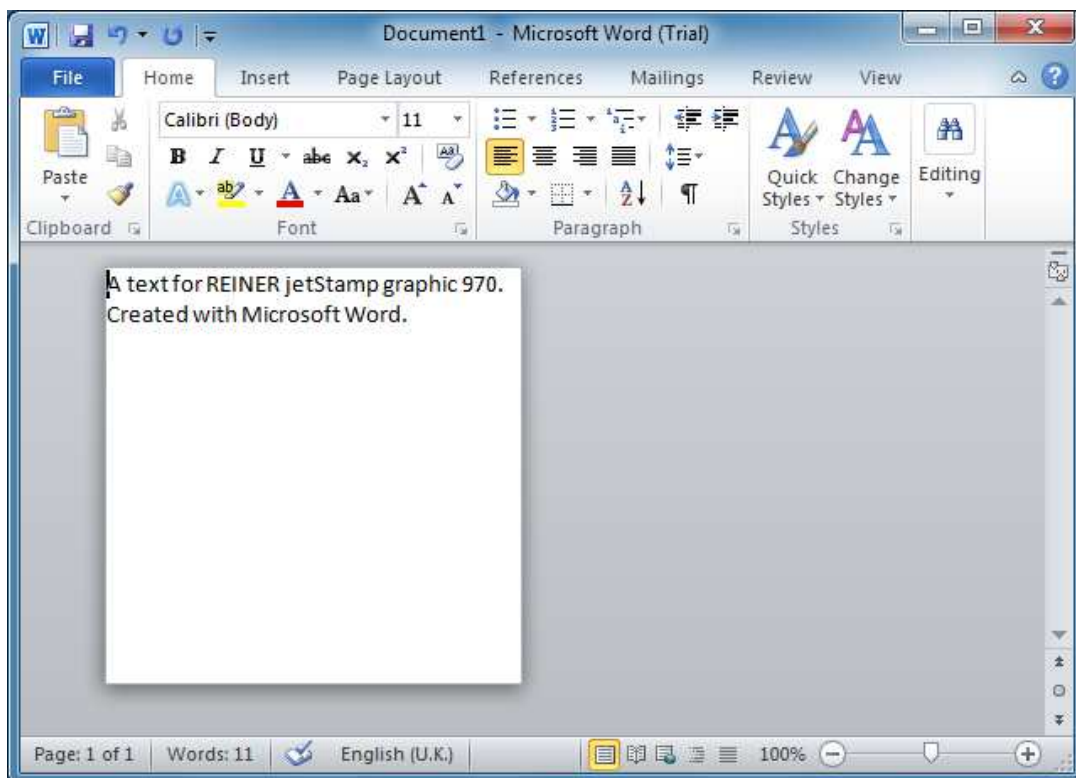


Press "Ignore", if Word reports margin errors.

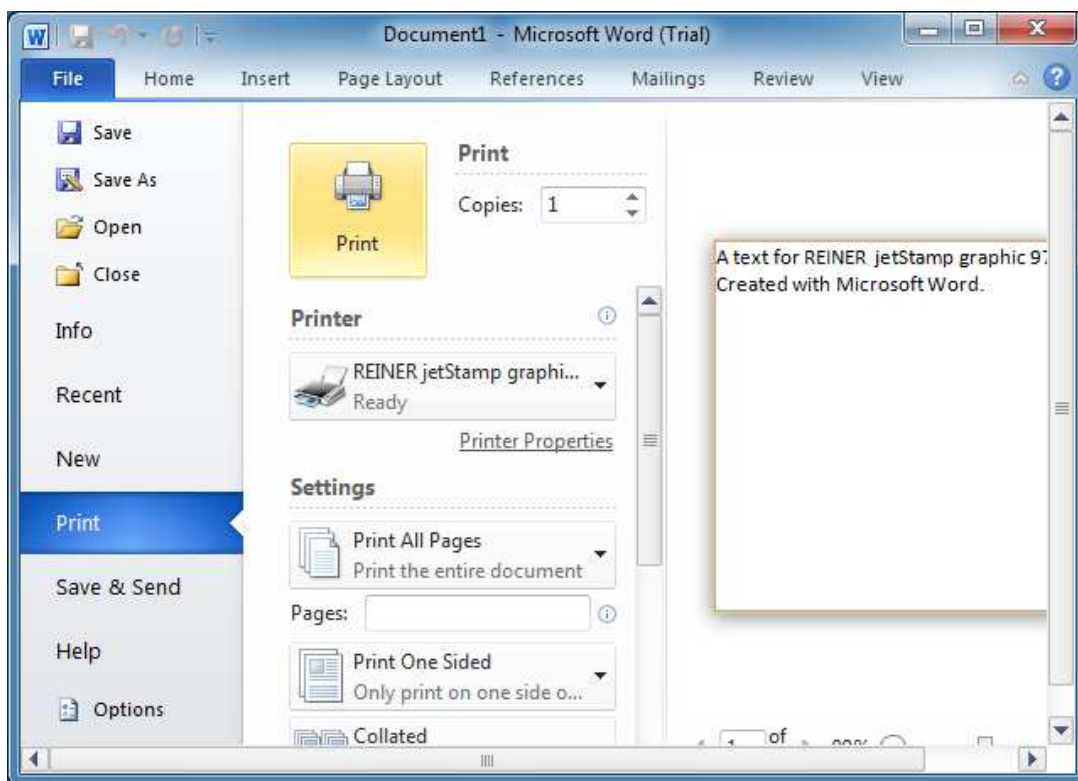


Insert a text.

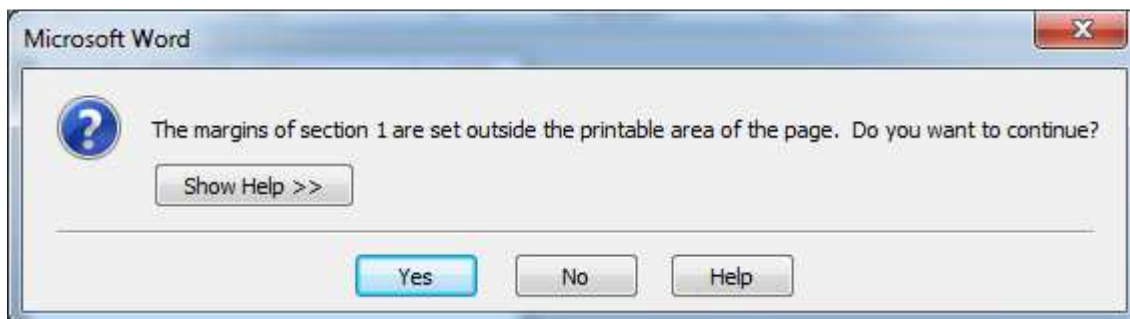
Note: The height of the print area is limited.



To print the document, go to File → Print and press “Print”.



Click button **Yes** if Word asks to continue.

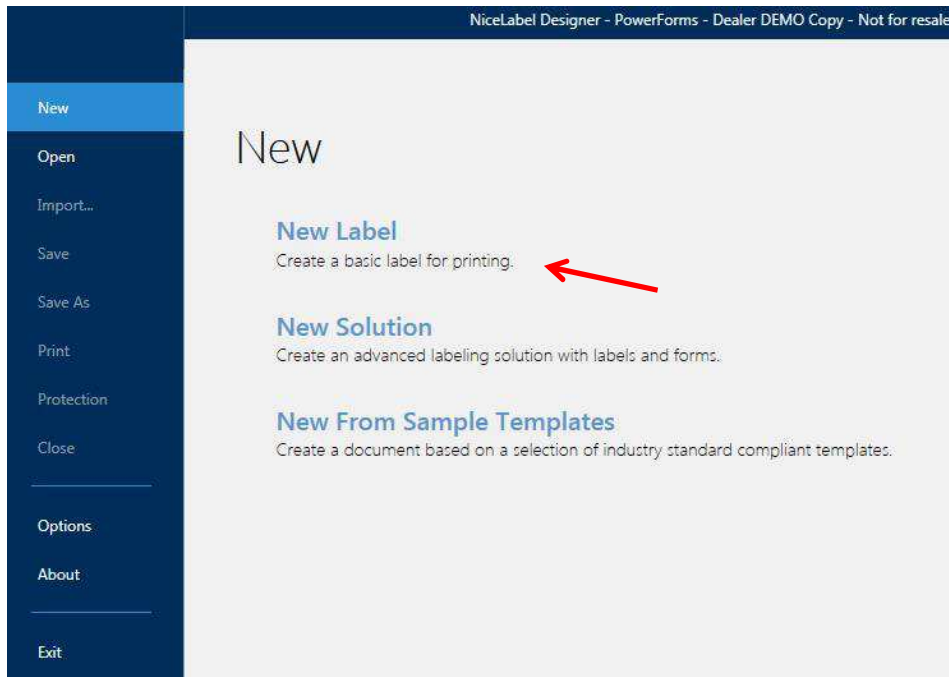


5. Use printer driver with extended functions

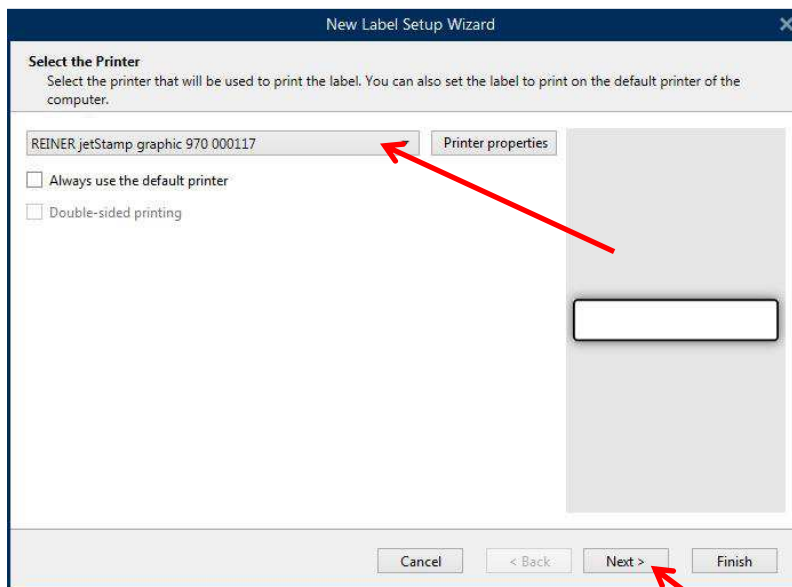
Printer driver supports also device internal functions like Counter, Date/Time or variable Barcode. These special functions are only accessible with NiceLabel Software.

The following steps are done with Software NiceLabel Designer Pro.

a. Create and print simple Label



Select correct printer



New Label Setup Wizard

Set the Page Size
If you use a thermal printer, it is recommended to automatically set the page size. You can also choose to manually set the page size. If you know the exact stock code of label page, you can choose it from the lists.

☐ Print on a roll of labels
Automatic detection of page size for thermal printers.

☒ **Print on a sheet of paper**
Manually set and modify the page size to fit your printer.

☐ Load settings from a predefined stock
Choose from a list of stocks organized by type and name.

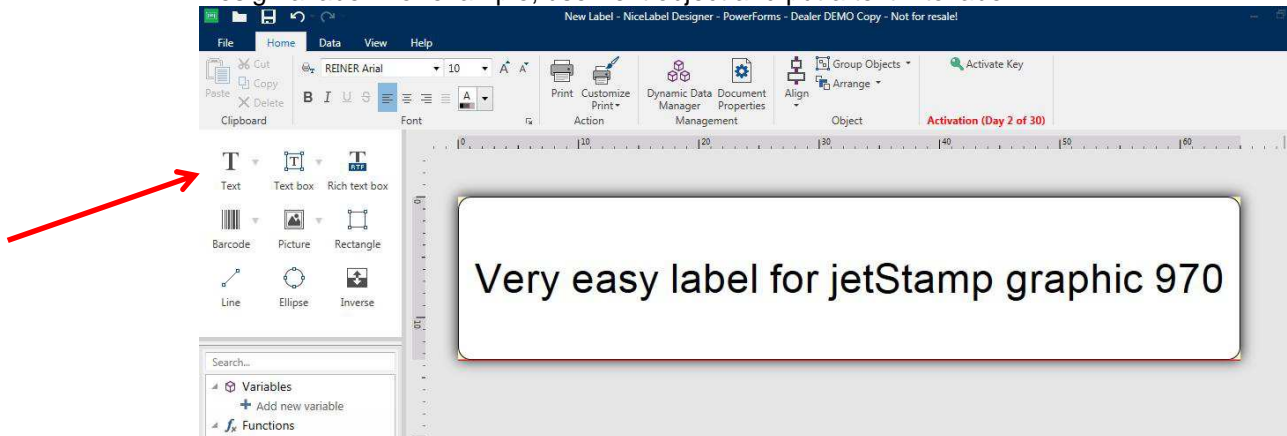
Unit of measure:

Paper:

Width:

Height:

Design a label. For example, use Text object and put a text into label.

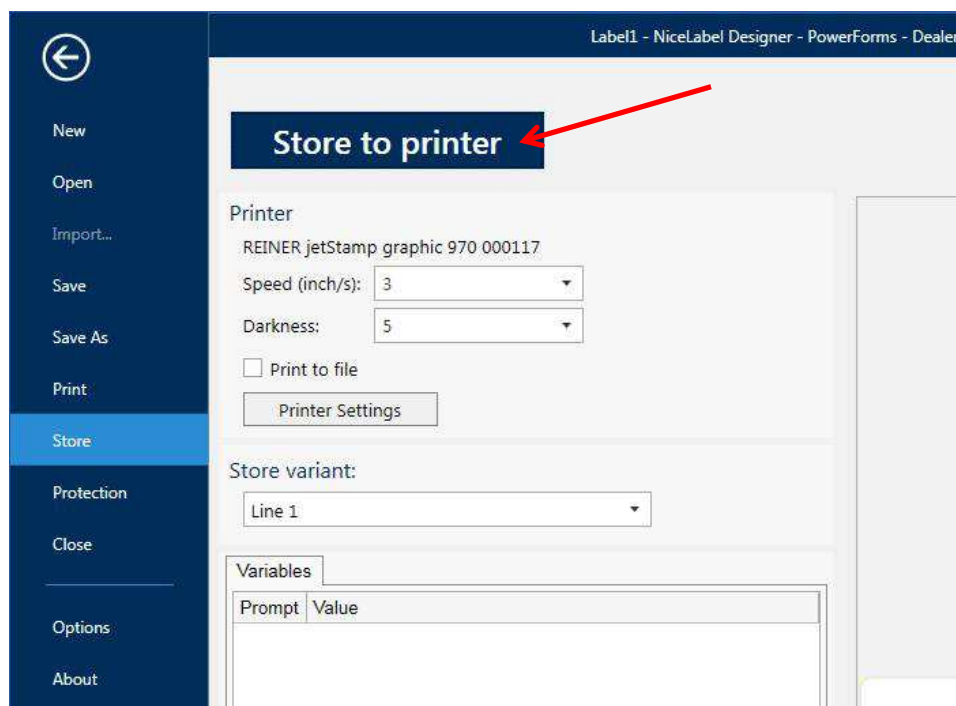


Store label to printer into nonvolatile memory

Note:

In case of USB connection turn set wheel to position **1**.

In case of Bluetooth connection turn set wheel to position **Online/Bluetooth**

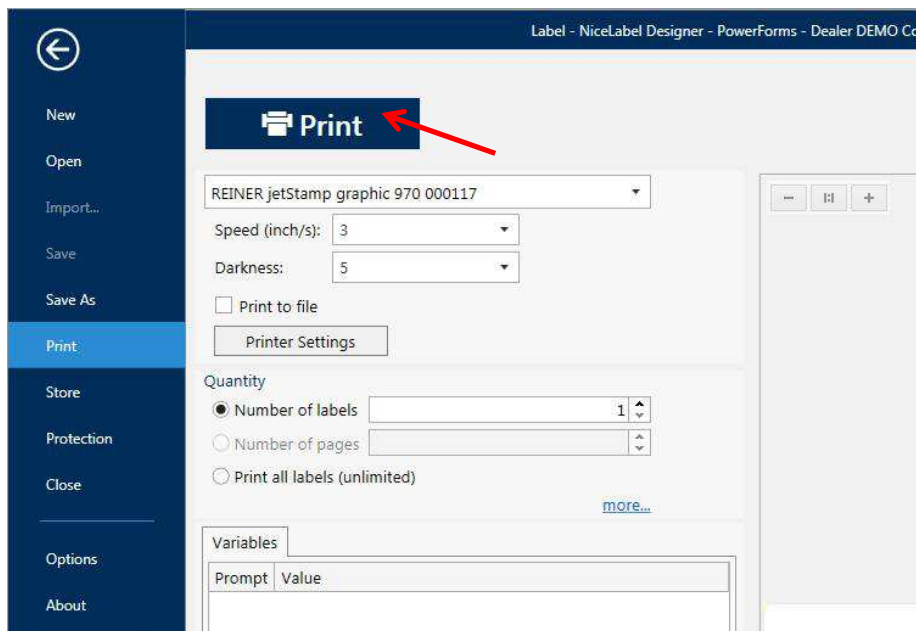


Note:

The stored label can only printed when set wheel of device is on position **1**. The label can be printed as often as desired.

Store label to printer into volatile memory**Note:**

In case of USB and Bluetooth connection, turn set wheel to position **Online/Bluetooth**

**Note:**

The transferred label can only be printed when set wheel of device is on position **Online/Bluetooth**. The label can only be printed once.


b. Create and print difficult label with Counter, Date/Time and variable Barcode

Open NiceLabel Pro and open new label as shown in chapter above.


Select general font which will be used for all text based object like Text, Counter or Date. The font can be changed in the properties of each object.

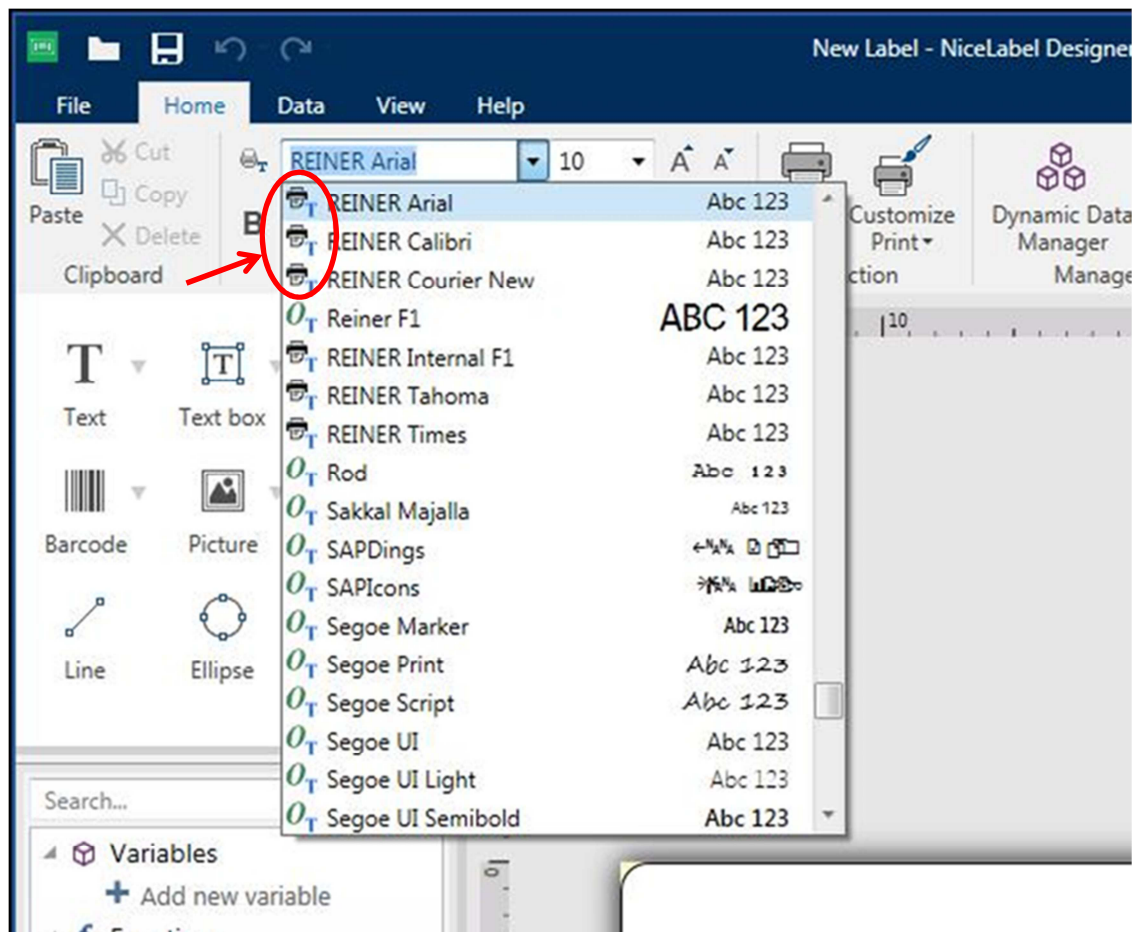
Note: There are only two different fonts per label allowed.

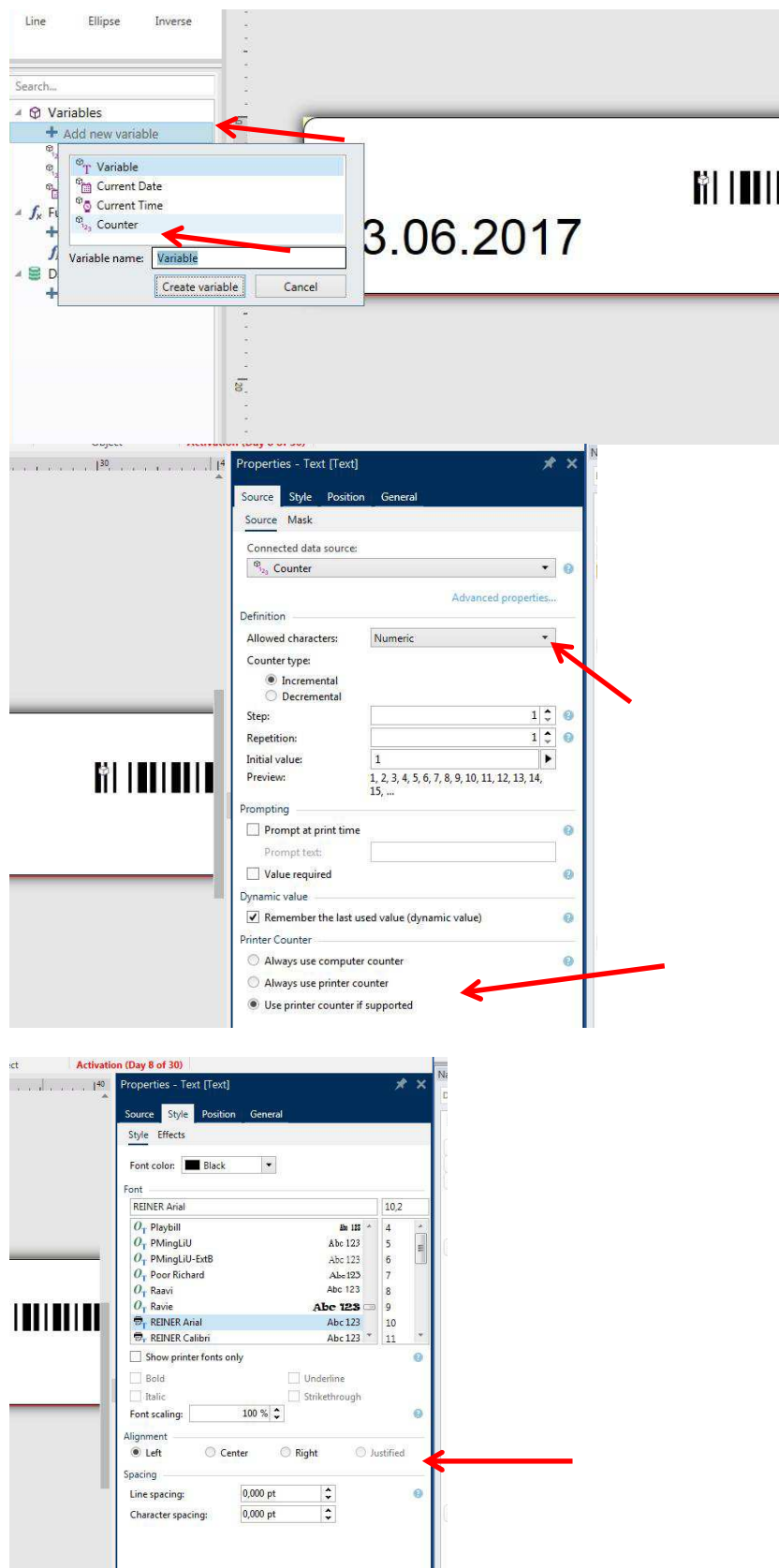


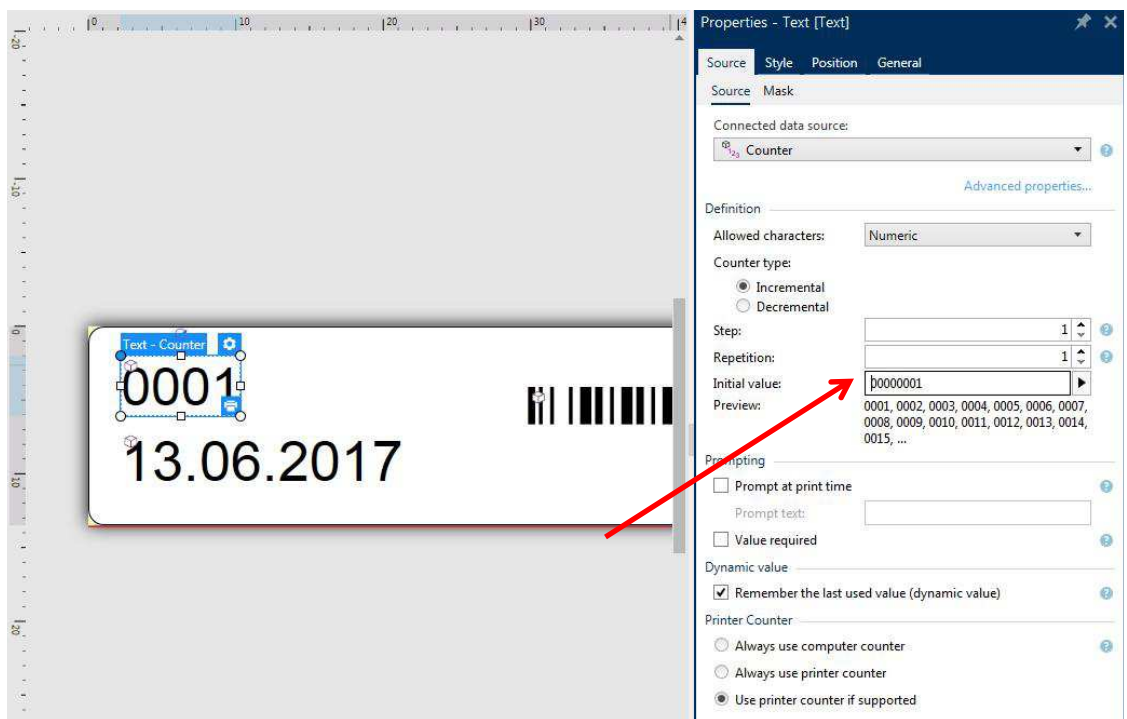
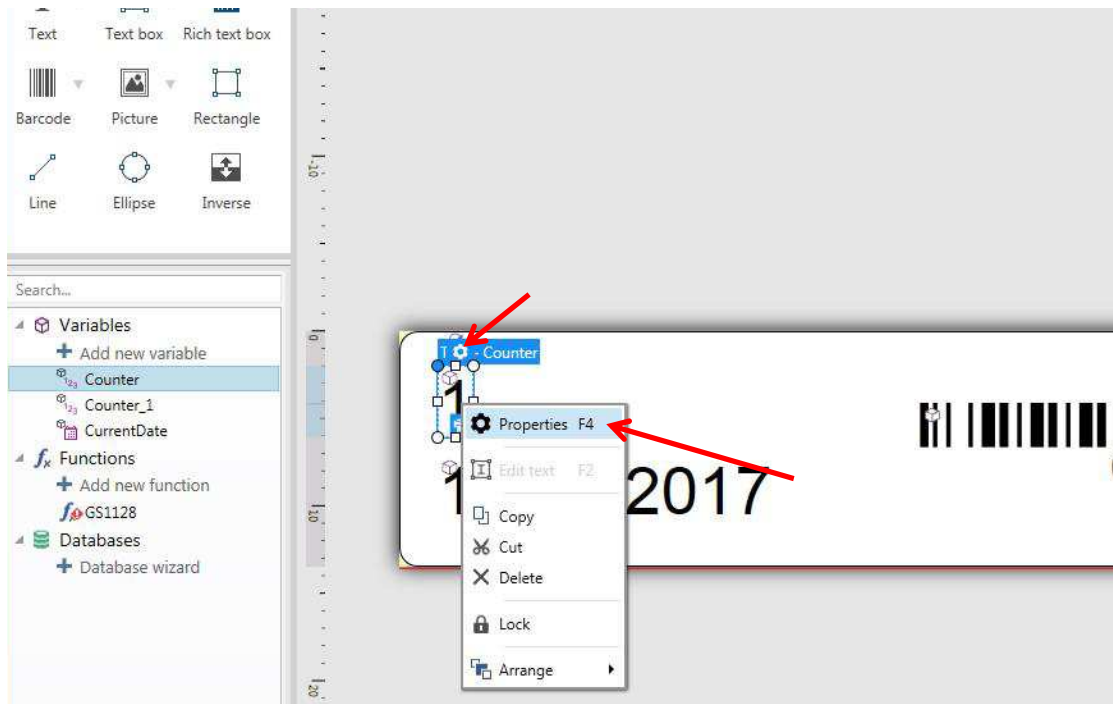
Note: Only the fonts with printer symbol () in front can be used for counter and date/time objects.



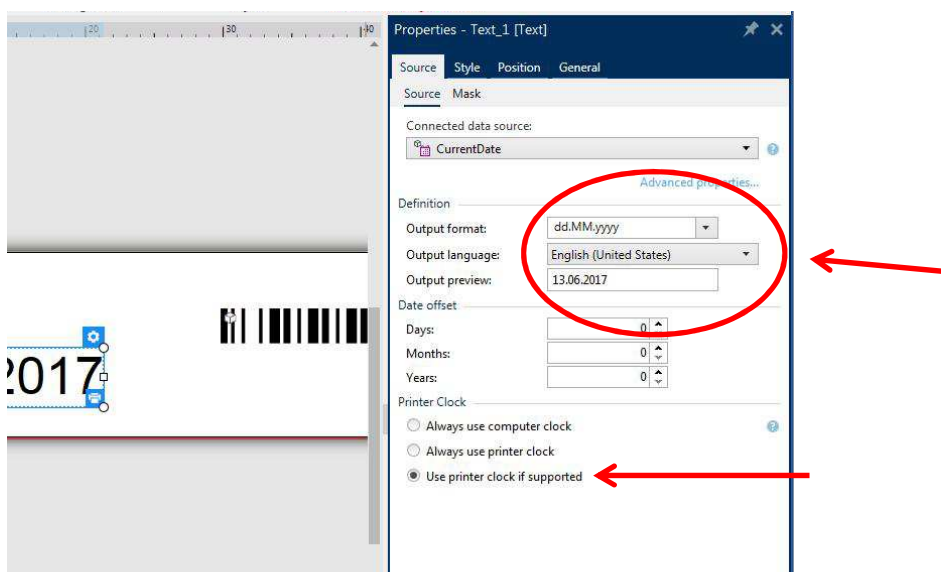
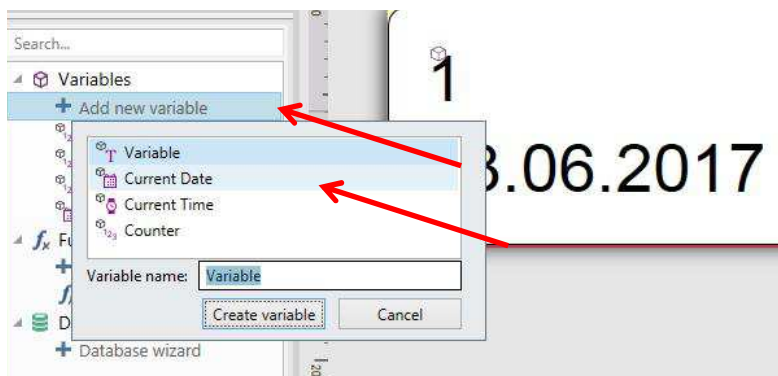
Note: Ensure that printer () are enabled fonts



Insert a Counter as follow



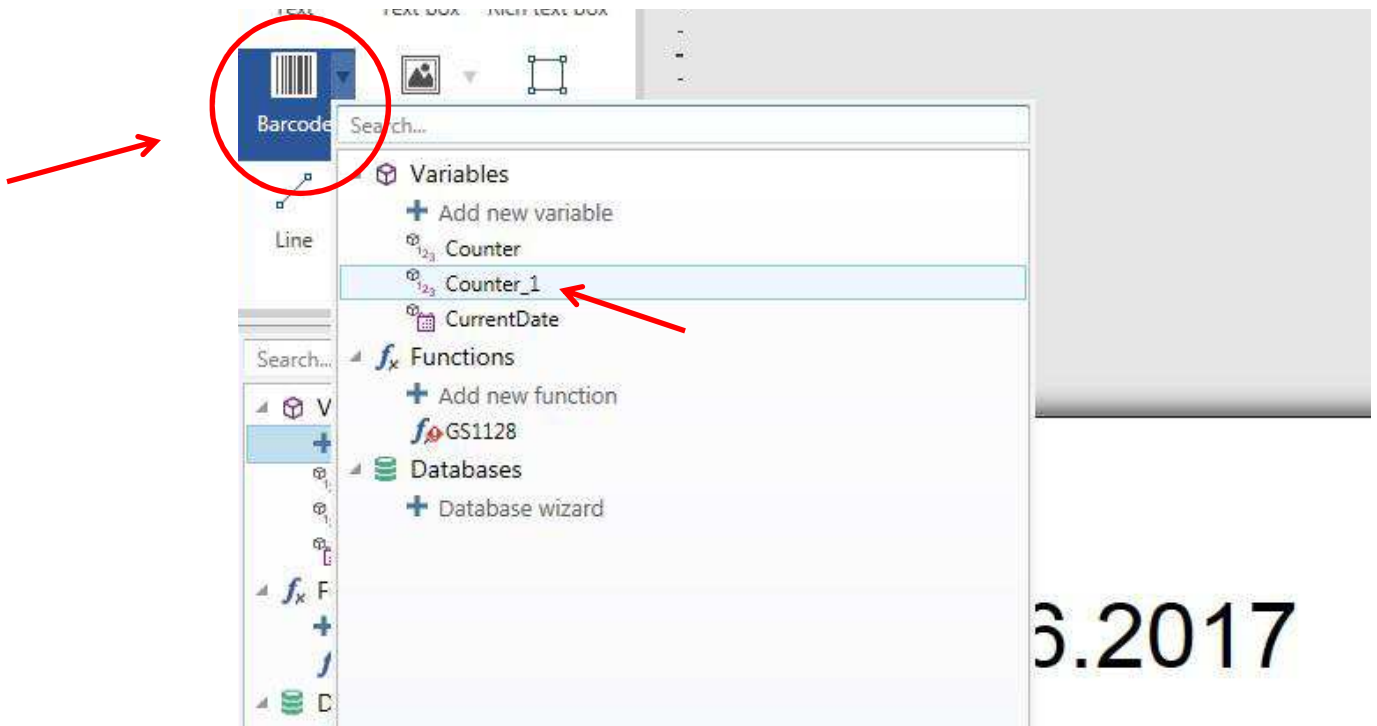
To get a counter with leading zeros type the desired combination in the field initial value.

Insert a date as follow

The format of the date is chosen then the language comes after the output preview.

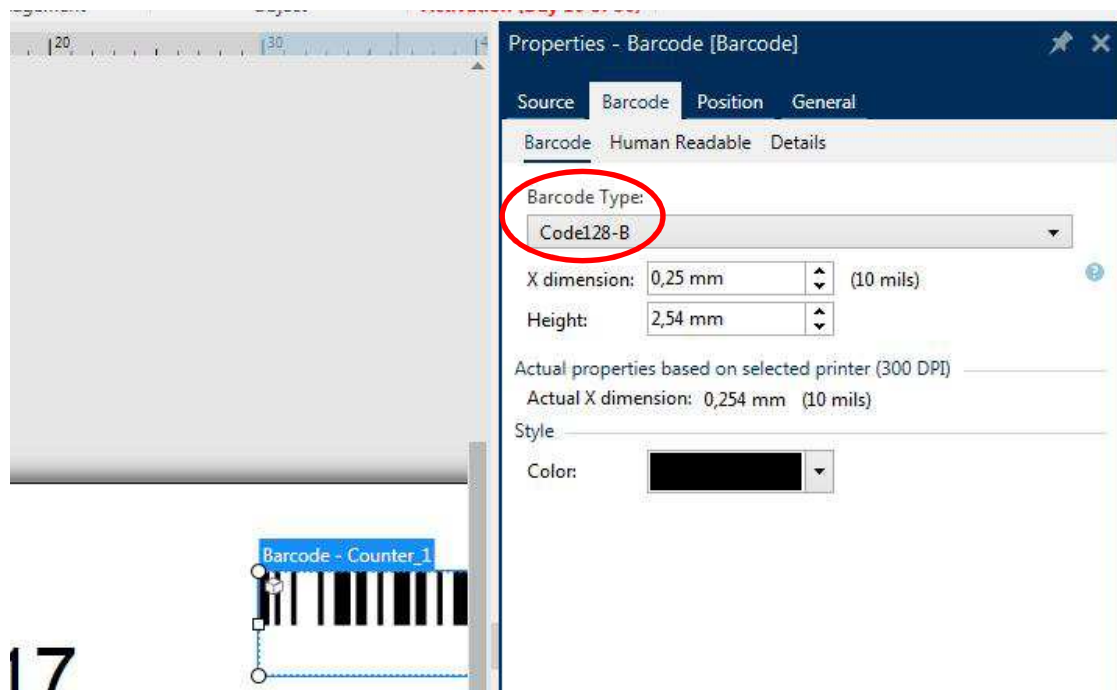
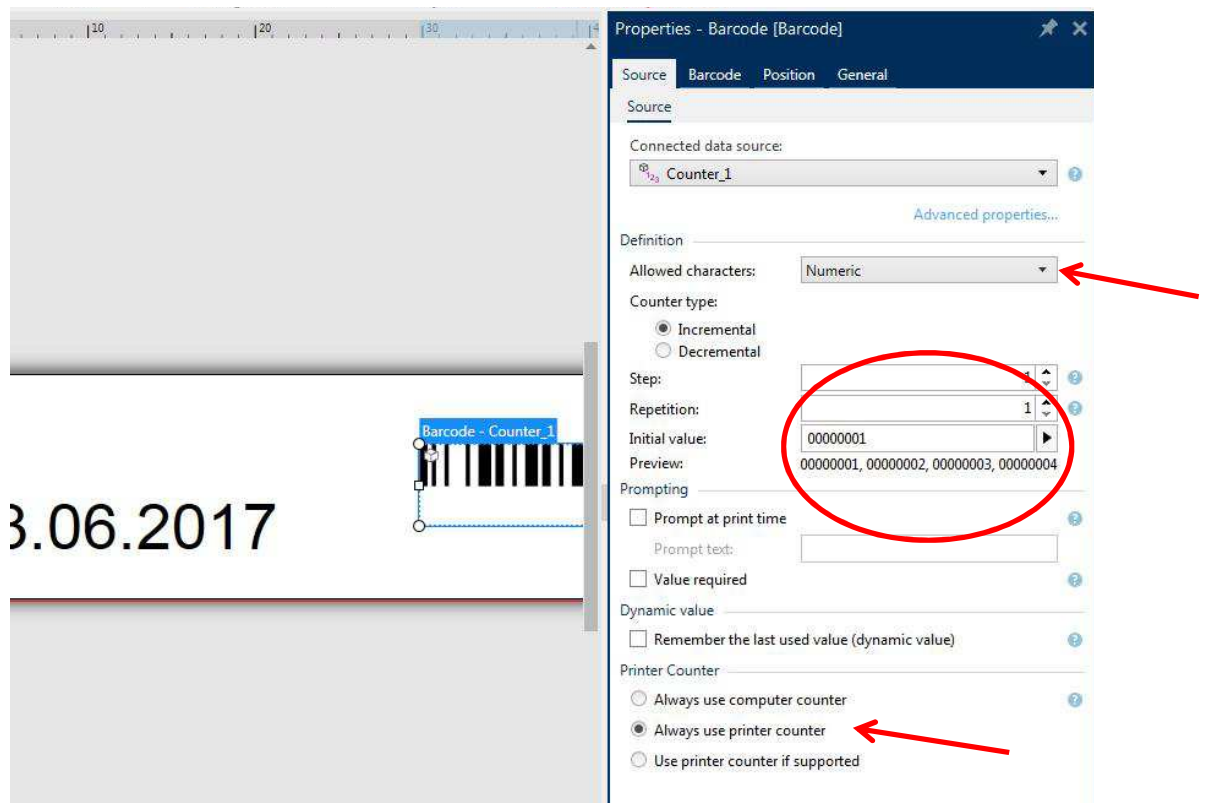


Insert a barcode with included counter as follow

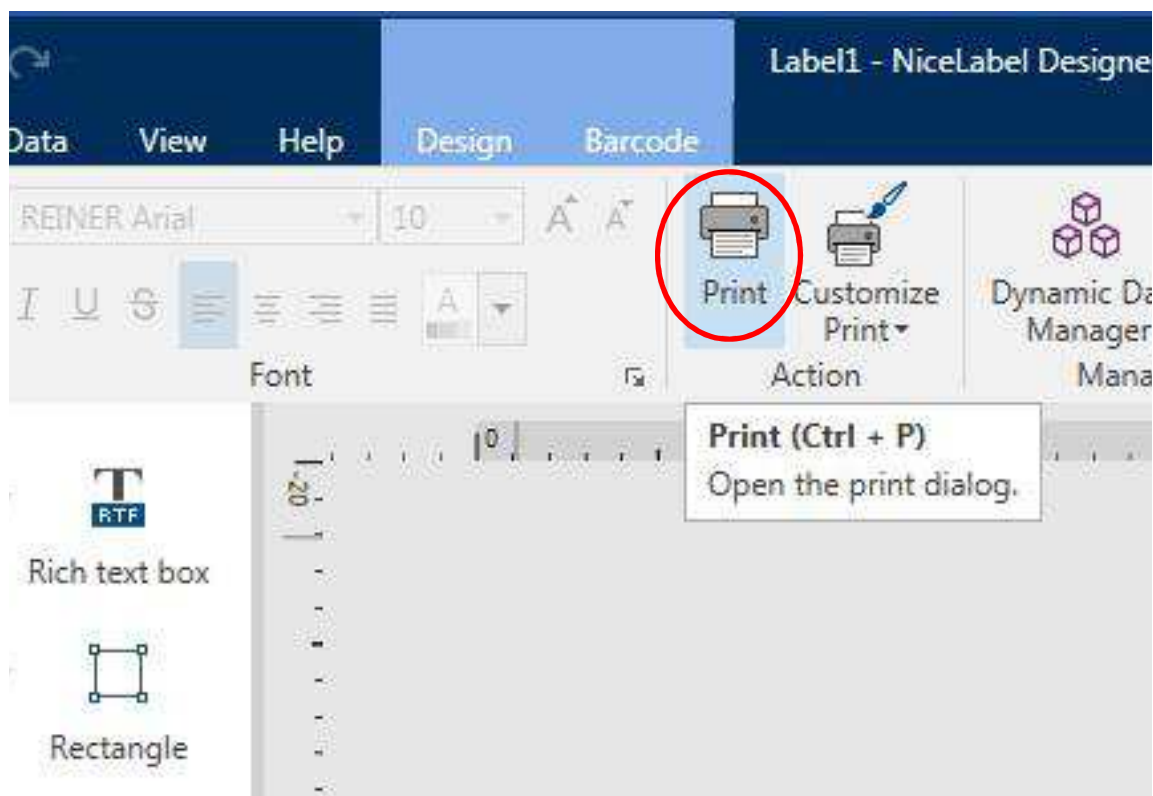
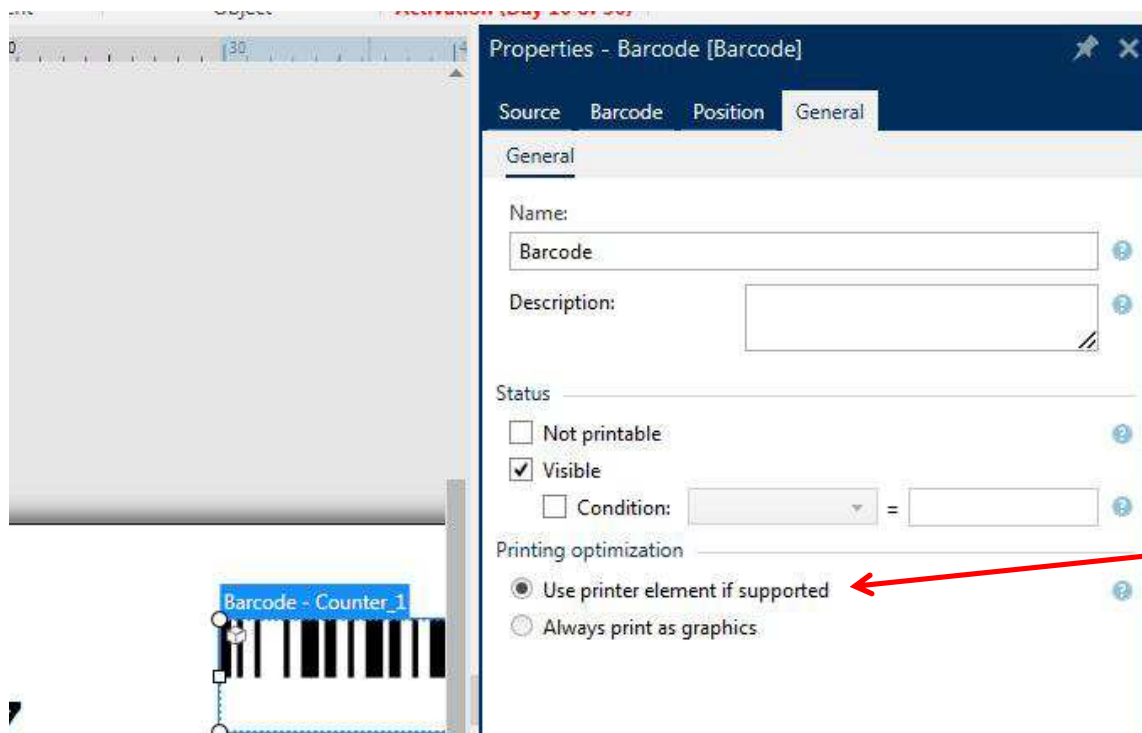


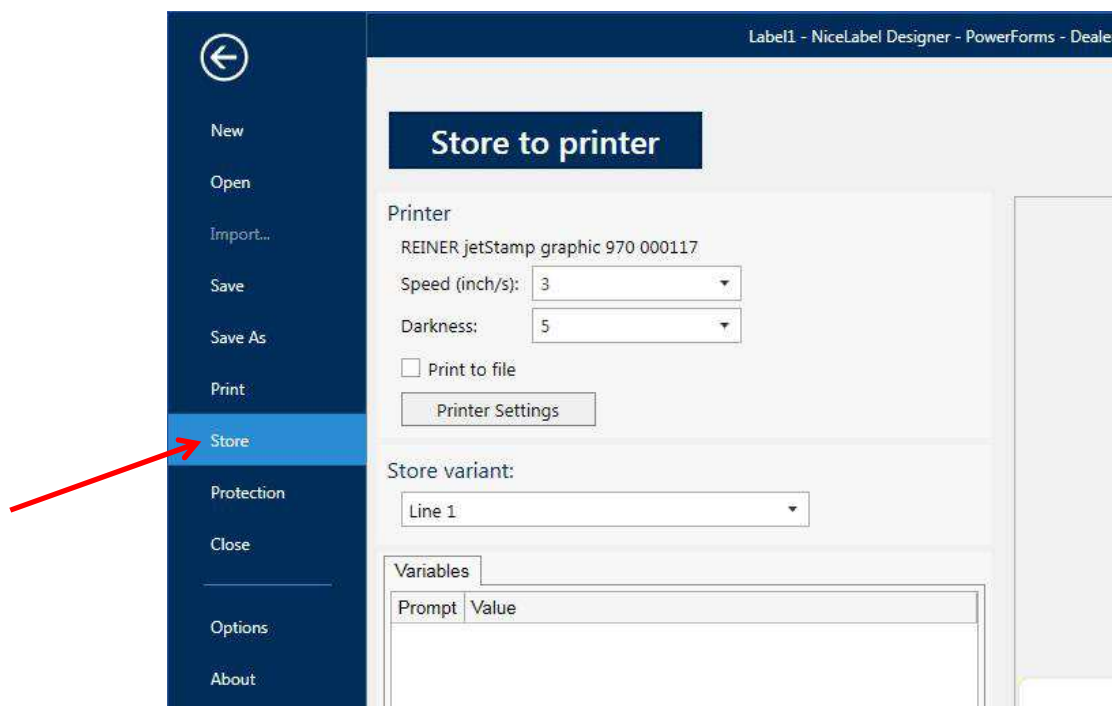
Right click on barcode object, and select Properties.





Note: Only Bar code type Code128-B, Code39 and Interleaved 2/5 are valid for variable Barcodes





Turn set wheel to position 1



The result:

